



## P490LC-11

### Specification

<b>Engine</b>	EU Stage V, Komatsu SAA6D125E-7 turbocharged common rail direct injection diesel engine, 270Kw/362hp
<b>Hydraulics</b>	Electronic closed-centre load sensing system
<b>Aux circuit</b>	Hammer & Rotate (1" ff Male couplings & 3/4 ff female pilot line)
<b>Boom</b>	Mono boom 7.1m
<b>Arm</b>	2.9m
<b>Safety</b>	Boom and arm safety valves Komatsu Komvision surround view system LED Light pack Neutral position detection system ROPS compliant to ISO 12117-2:2008
<b>Attachments</b>	Hills Tefra Quick hitch (EC480 pick-up)
<b>Lynch Additional Specification</b>	White noise travel alarm Green seat belt warning light Amber beacon Red seat belt Boxing ring Signwriting Komtrax Telematics Hi Viz handrails and steps Auto Lube system Lift certification
<b>Available Options</b>	HVO Fuel Compatible Machine Control (Leica & Trimble) Height & Slew restrictors ( GKD & X Watch)

# Dimensions & Performance Figures

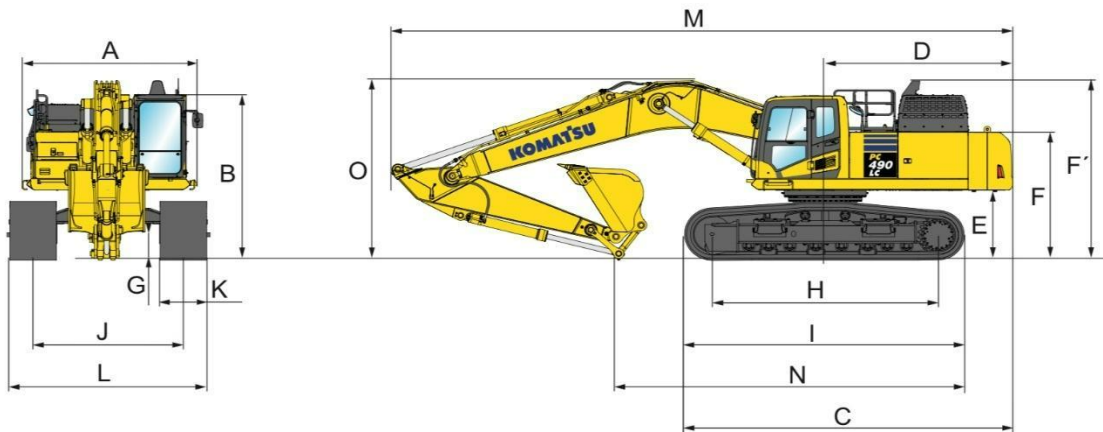
## OPERATING WEIGHT (APPR.)

Triple grouser shoes 800 mm	Operating weight 48,370 kg	Ground pressure 0.64 kg/cm <sup>2</sup>
--------------------------------	-------------------------------	--------------------------------------------

## MACHINE DIMENSIONS

## PC490LC-11

A	Overall width of upper structure	2995 mm
B	Overall height of cab	3360 mm
C	Overall length of basic machine	6300 mm
D	Tail length	3605 mm
	Tail swing radius	3645 mm
E	Clearance under counterweight	1385 mm
F	Machine tail height	2560 mm
F'	Machine tail height (top of engine cover)	3630 mm
G	Ground clearance	700 mm
H	Tumbler centre distance	4350 mm
I	Track length	5385 mm
J	Track gauge	2890 mm
K	Track shoe width	800 mm
L	Overall track width with 800 mm shoes	3690 - 3190 mm



## TRANSPORT DIMENSIONS

## MONO BOOM

M	Transport length	12000 mm
N	Length on ground (transport)	7620 mm
O	Overall height (to top of boom)	3760 mm

## PC490LC-11 / MAX. BUCKET CAPACITY AND WEIGH

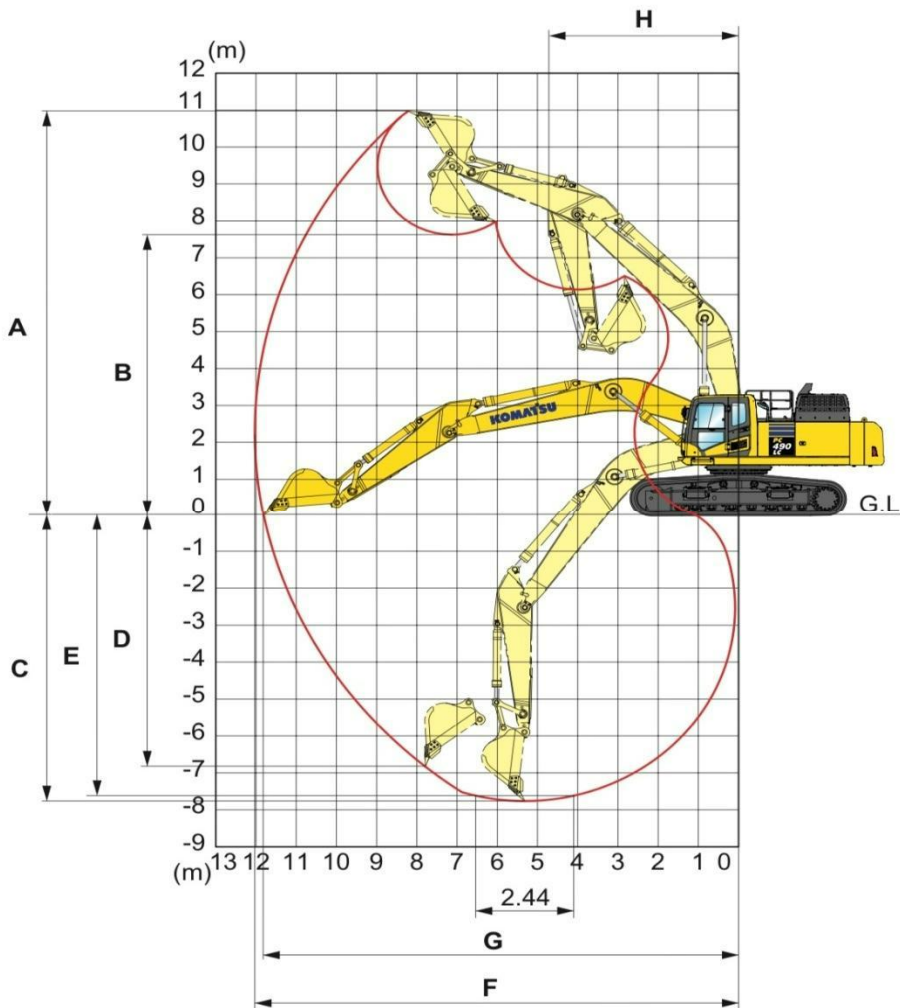
Material weight up to 1.2 t/m <sup>3</sup>	2.76 m <sup>3</sup> 2.175 kg
Material weight up to 1.5 t/m <sup>3</sup>	2.76 m <sup>3</sup> 2.175 kg
Material weight up to 1.8 t/m <sup>3</sup>	2.76 m <sup>3</sup> 2.175 kg

## BUCKET AND ARM FORCE

Bucket digging force	26100 kg
Bucket digging force at Power Max	28000 kg
Arm crowd force	24400 kg
Arm crowd force at Power Max	26200 kg















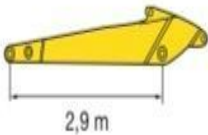
# Working Range

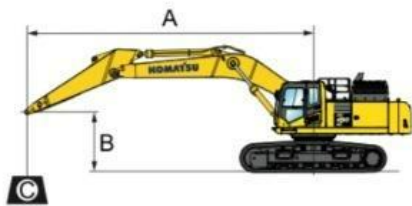


<b>A</b>	Max. digging height	10350 mm
<b>B</b>	Max. dumping height	7145 mm
<b>C</b>	Max. digging depth	7280 mm
<b>D</b>	Max. vertical wall digging depth	5635 mm
<b>E</b>	Max. digging depth of cut for 2,44 m level	7090 mm
<b>F</b>	Max. digging reach	11445 mm
<b>G</b>	Max. digging reach at ground level	11215 mm
<b>H</b>	Min. swing radius	4810 mm

# Lifting Capacity

## PC490LC-11 MONO BOOM

Arm length	A		↔		9,0 m		7,5 m		6,0 m		4,5 m		3,0 m	
	B													
	7,5 m	kg	*12.150	10.780			*12.310	11.990						
	6,0 m	kg	*11.930	9.220			*12.790	11.800	*14.530	*14.530				
	4,5 m	kg	*11.890	8.370	*12.130	8.830	*13.680	11.460	*16.380	15.720				
	3,0 m	kg	11.630	7.940	*12.530	8.650	*14.630	11.090	*18.200	14.990				
	1,5 m	kg	11.510	7.820	12.530	8.480	*15.310	10.770	*19.330	14.460				
	0,0 m	kg	11.840	8.010	12.410	8.370	*15.480	10.570	*19.460	14.190				
	-1,5 m	kg	*12.250	8.590			*14.920	10.510	*18.630	14.130	*23.440	21.560		
	-3,0 m	kg	*12.110	9.800			*13.280	10.600	*16.740	14.240	*20.660	*20.660	*24.100	*24.100
	-4,5 m	kg	*11.370	*11.370					*13.180	*13.180	*16.280	*16.280		
	-6,0 m	kg												



A – Reach from swing centre  
 B – Bucket hook height  
 C – Lifting Capacities

-  – Rating over front
-  – Rating over side
-  – Rating at maximum reach

\* Load is limited by hydraulic capacity rather than tipping. Ratings are based on SAE Standard No. J1097. Rated loads do not exceed 87% of hydraulic lift capacity or 75% of tipping load. Lifting capacity stated is based on lifting with bare arm. When lifting with additional equipment installed to the arm, please subtract the weight of all additional equipment from the values stated.