



## PC360LC-11 Super Long Front

### Specification

<b>Engine</b>	EU Stage V, Komatsu SAA6D114E-6 turbocharged common rail direct injection diesel engine, 202Kw/271hp
<b>Hydraulics</b>	Electronic closed-centre load sensing system
<b>Aux circuit</b>	Hammer & Rotate (1" ff Male couplings & ½" ff female pilot line)
<b>Boom</b>	12.4m Mono boom
<b>Arm</b>	10.7m
<b>Safety</b>	<ul style="list-style-type: none"> <li>Boom and arm safety valves</li> <li>Komatsu Komvision surround view system</li> <li>LED Light pack</li> <li>Neutral position detection system</li> <li>ROPS compliant to ISO 12117-2:2008</li> </ul>
<b>Attachments</b>	Hills Tefra Quick hitch (EC220 pick-up)
<b>Lynch Additional Specification</b>	<ul style="list-style-type: none"> <li>Bio hydraulic oil</li> <li>White noise travel alarm</li> <li>Green seat belt warning light</li> <li>Amber beacon</li> <li>Red seat belt</li> <li>Boxing ring</li> <li>Signwriting</li> <li>Komtrax Telematics</li> <li>Hi Viz handrails and steps</li> <li>Lift certification</li> </ul>
<b>Available Options</b>	<ul style="list-style-type: none"> <li>HVO Fuel Compatible</li> <li>Machine Control (Leica &amp; Trimble)</li> <li>Height &amp; Slew restrictors ( GKD &amp; X Watch</li> </ul>

# Dimensions & Performance Figures

## OPERATING WEIGHT (APPR.)

Triple grouser shoes  
800 mm

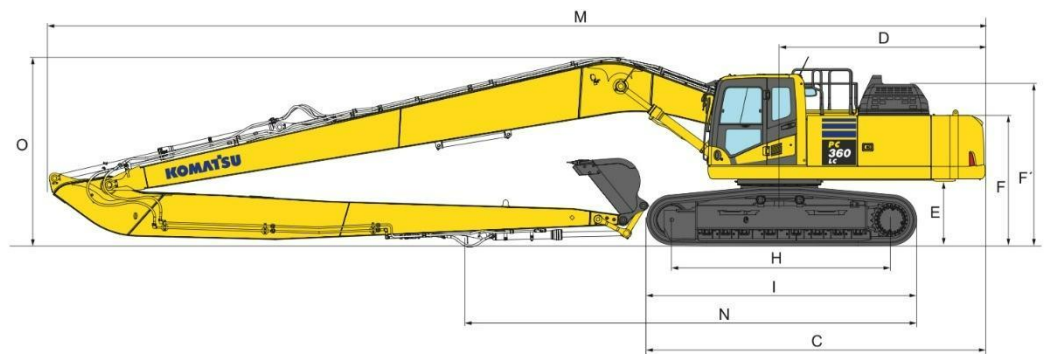
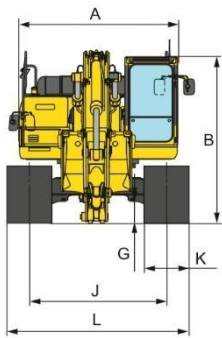
Operating weight  
42,960 kg

Ground pressure  
0.61 kg/cm<sup>2</sup>

## MACHINE DIMENSIONS

## PC360LC-11SLF

A	Overall width of upper structure	2995 mm
B	Overall height of cab	3160 mm
C	Over length of basic machine	6200 mm
D	Tail Length	3770 mm
	Tail swing radius	3820 mm
E	Clearance under counterweight	1185 mm
F	Machine tail height	2920 mm
G	Ground clearance	500 mm
H	Tumbler centre distance	4030 mm
I	Track length	4955 mm
J`	Track gauge	2590 mm
K	Shoe width	800 mm
L	Overall track width	3390 mm

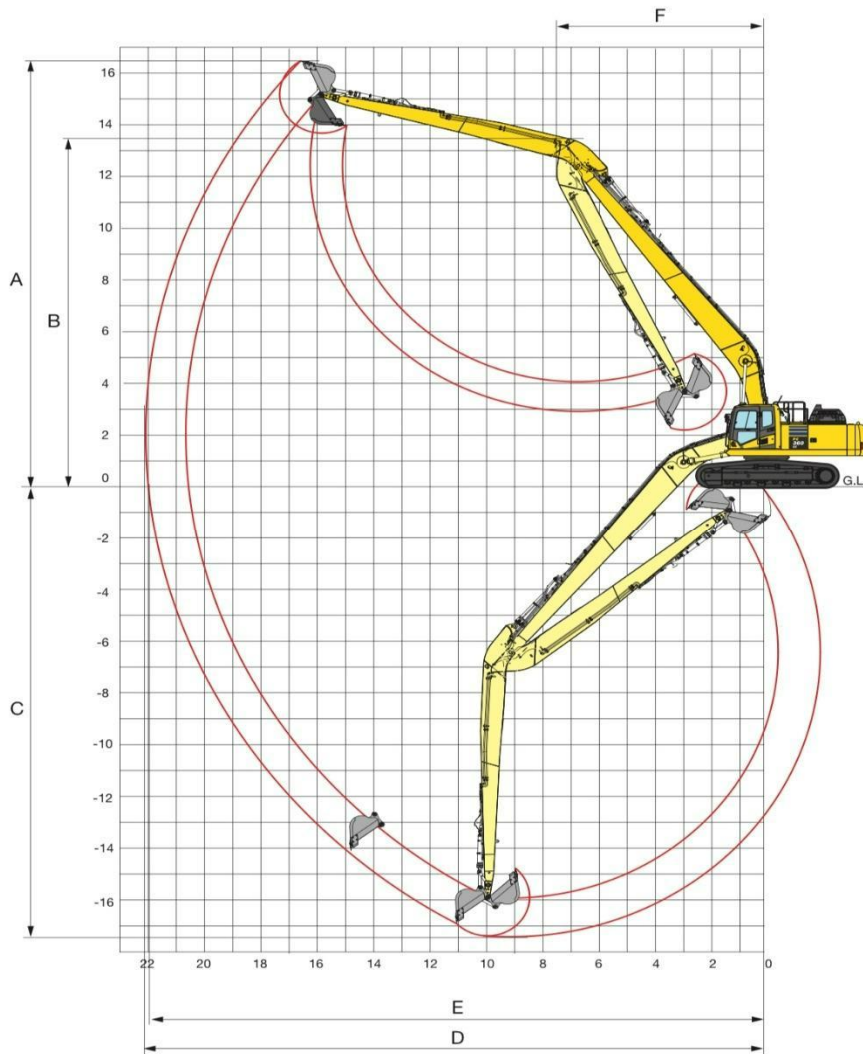


## TRANSPORT DIMENSIONS

## MONO BOOM

M	Transport length	17210 mm
N	Length on ground (transport)	11800 mm
O	Overall height (to top of boom)	3470 mm

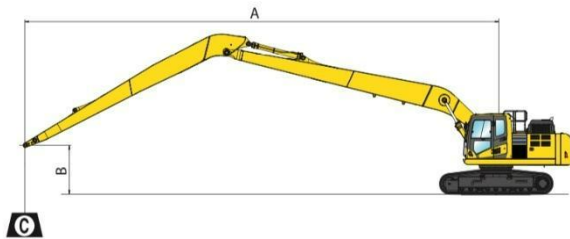
# Working Range



<b>A</b>	Max. digging height	16260 mm
<b>B</b>	Max. dumping height	13480 mm
<b>C</b>	Max. digging depth	17485 mm
<b>D</b>	Max. digging reach	22010 mm
<b>E</b>	Max. digging reach at ground level	21915 mm
<b>F</b>	Min. swing radius	7350 mm

# Lifting Capacity

A	↔		20.0 m		18.0 m		16.0 m		14.0 m		12.0 m		10.0 m		8.0 m		6.0 m		
	📏	📏	📏	📏	📏	📏	📏	📏	📏	📏	📏	📏	📏	📏	📏	📏	📏	📏	
13.5 m	kg	*1550	*1550																
10.5 m	kg	*1500	*1500			*2150	*2150	*2250	*2250										
9.0 m	kg	*1500	*1500			*2200	*2200	*2300	*2300										
6.0 m	kg	*1500	*1500	*2000	2000	*2250	*2250	*2450	*2450	*2650	*2650								
3.0 m	kg	*1550	*1550	*2200	1900	*2350	2350	*2600	*2600	*2950	*2950	*3400	*3400	*4050	*4050	*5100	*5100		
0.0 m	kg	*1650	1650	*2250	1750	*2500	2150	*2800	2650	*3200	*3200	*3800	*3800	*4650	*4650	*6000	*6000	*7150	*7150
-3.0 m	kg	*1850	1650	*2250	1700	*2550	2000	*2900	2400	*3400	2950	*4050	3600	*5000	4550	*6500	6000	*6350	*6350
-6.0 m	kg	*2200	1800			*2500	1950	*2950	2300	*3450	2750	*4150	3350	*5100	4250	*6500	5700	*7650	*7650
-9.0 m	kg	*2250	2050					*2700	2300	*3250	2700	*3950	3350	*4850	4250	*6050	5700	*7950	*7950
-10.5 m	kg	*2250	*2250					*2450	2350	*3050	2750	*3700	3400	*4550	4300	*5650	*5650	*7300	*7300
-13.5 m	kg	*2050	*2050									*2750	*2750	*3450	*3450	*4250	*4250	*5300	*5300
-15.0 m	kg	*1800	*1800											*2500	*2500	*3150	*3150	*3800	*3800



**A – Reach from swing centre**  
**B – Bucket hook height**  
**C – Lifting Capacities, including (370kg) bucket linkage and bucket cylinder**

- 📏 – Rating over front
- 📏 – Rating over side
- 📏 – Rating at maximum reach

\* Load is limited by hydraulic capacity rather than tipping. Ratings are based on SAE Standard No. J1097. Rated loads do not exceed 87% of hydraulic lift capacity or 75% of tipping load. Lifting capacity stated is based on lifting with bare arm. When lifting with additional equipment installed to the arm, please subtract the weight of all additional equipment from the values stated.