



P360LC-11

Specification

Engine	EU Stage V, Komatsu SAA6D114E-6 turbocharged common rail direct injection diesel engine, 202Kw/271hp
Hydraulics	Electronic closed-centre load sensing system
Aux circuit	Hammer & Rotate (1"1/4 ff Male couplings & 1/2" ff female pilot line)
Boom	Mono boom
Arm	3.2m
Safety	<ul style="list-style-type: none"> Boom and arm safety valves Komatsu Komvision surround view system LED Light pack Neutral position detection system ROPS compliant to ISO 12117-2:2008
Attachments	Hills Tefra Quick hitch (EC380 pick-up)
Lynch Additional Specification	<ul style="list-style-type: none"> White noise travel alarm Green seat belt warning light Amber beacon Red seat belt Boxing ring Signwriting Komtrax Telematics Hi Viz handrails and steps Lift certification
Available Options	<ul style="list-style-type: none"> HVO Fuel Compatible Machine Control (Leica & Trimble) Height & Slew restrictors (GKD & X Watch)

Dimensions & Performance Figures

OPERATING WEIGHT (APPR.)

Triple grouser shoes
700 mm

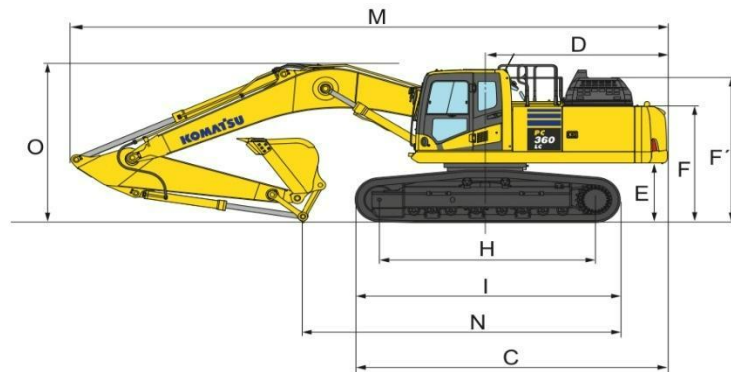
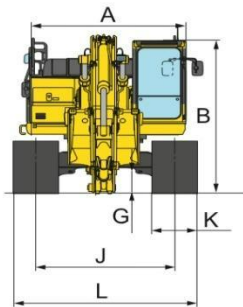
Operating weight
36,280 kg

Ground pressure
0.59 kg/cm²

MACHINE DIMENSIONS

PC360LC-11

A	Overall width of upper structure	2995 mm
B	Overall height of cab	3160 mm
C	Overall length of basic machine	5880 mm
D	Tail length	3405 mm
	Tail swing radius	3445 mm
E	Clearance under counterweight	1185 mm
F	Machine tail height	2350 mm
F'	Machine tail height (top of engine cover)	2920 mm
G	Ground clearance	498 mm
H	Tumbler centre distance	4030 mm
I	Track length	4955 mm
J	Track gauge	2590 mm
K	Track shoe width	700 mm
L	Overall track width with 700 mm shoes	3290 mm



TRANSPORT DIMENSIONS

MONO BOOM

M	Transport length	11145 mm
N	Length on ground (transport)	5935 mm
O	Overall height (to top of boom)	3320 mm

PC360LC-11 / MAX. BUCKET CAPACITY AND WEIGH

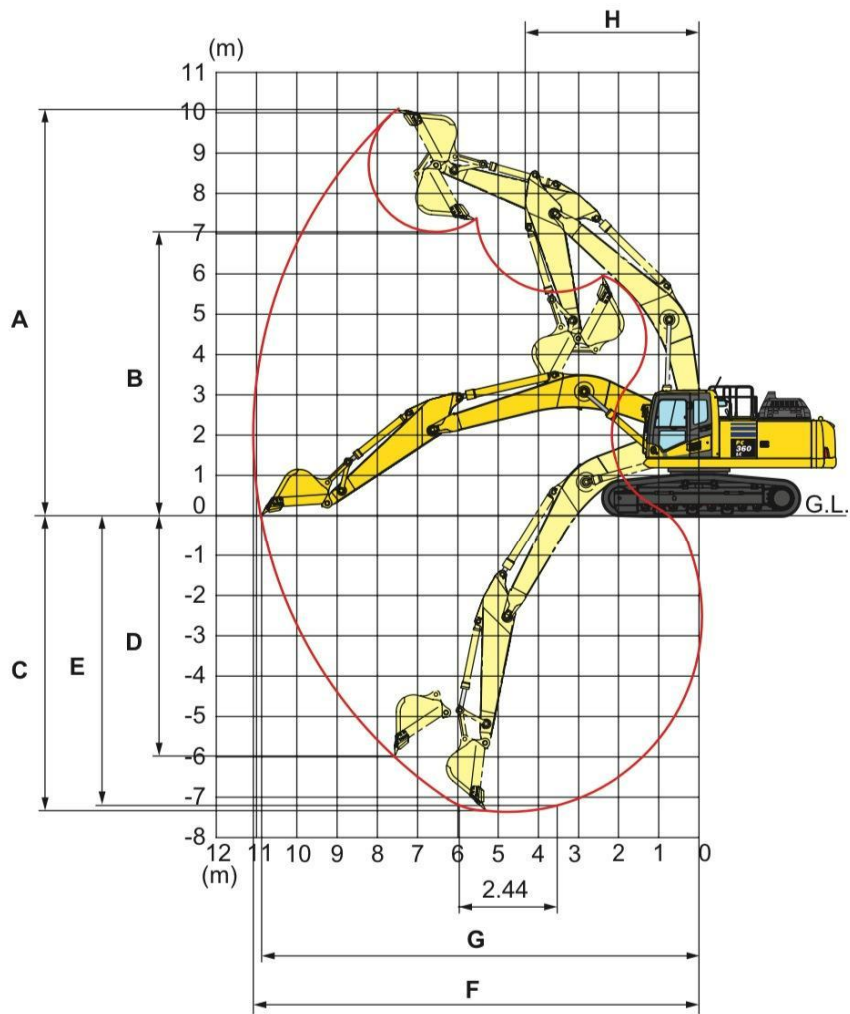
Material weight up to 1,2 t/m ³	2,47 m ³ 1.575 kg
Material weight up to 1,5 t/m ³	2.08 m ³ 1.425 kg
Material weight up to 1,8 t/m ³	1.80 m ³ 1.300 kg

BUCKET AND ARM FORCE

Bucket digging force	21600 kg
Bucket digging force at Power Max	23200 kg
Arm crowd force	16300 kg
Arm crowd force at Power Max	17400 kg



Working Range








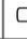






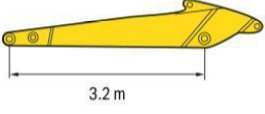


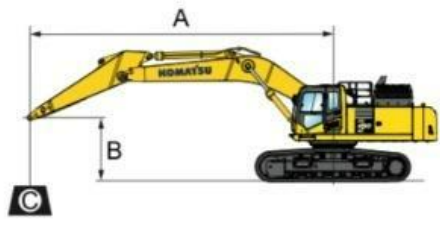
A	Max. digging height	10210 mm
B	Max. dumping height	7110 mm
C	Max. digging depth	7380 mm
D	Max. vertical wall digging depth	5980 mm
E	Max. digging depth of cut for 2,44 m level	7180 mm
F	Max. digging reach	11100 mm
G	Max. digging reach at ground level	10920 mm
H	Min. swing radius	4310 mm

Lifting Capacity

PC360LC-11 Mono boom

With 700 mm shoes

Arm length	A		↻		9.0 m		7.5 m		6.0 m		4.5 m		3.0 m		1.5 m	
	B															
	6.0 m	kg	*6960	6240			*8760	7640								
	4.5 m	kg	*7030	5570	*7650	5640	*9270	7440	*10700	10320						
	3.0 m	kg	*7310	5220	8280	5530	*9950	7180	*12060	9800	*16280	14670				
	1.5 m	kg	7660	5090	8150	5410	*10530	6930	*13170	9330	*18170	13790				
	0.0 m	kg	7830	5180	8050	5320	10370	6740	*13660	9040	*18460	13420				
	-1.5 m	kg	8390	5520			10280	6660	*13400	8920	*17600	13360	*13300	*13300		
	-3.0 m	kg	*8630	6270			*9470	6710	*12240	8950	*15750	13480	*20330	*20330		
	-4.5 m	kg	*8140	7920					*9690	9160	*12560	*12560	*15600	*15600		
-6.0 m	kg															



A – Reach from swing centre
 B – Bucket hook height
 C – Lifting Capacities

-  – Rating over front
-  – Rating over side
-  – Rating at maximum reach

* Load is limited by hydraulic capacity rather than tipping. Ratings are based on SAE Standard No. J1097. Rated loads do not exceed 87% of hydraulic lift capacity or 75% of tipping load. Lifting capacity stated is based on lifting with bare arm. When lifting with additional equipment installed to the arm, please subtract the weight of all additional equipment from the values stated.