



PC290LC-11

Specification

Engine	EU Stage V, Komatsu SAA6D107E-3 turbocharged common rail direct injection diesel engine, 159Kw/213hp
Hydraulics	Electronic closed-centre load sensing system
Aux circuit	Hammer & Rotate (1" ff Male couplings & ½" ff female pilot line)
Boom	Mono boom
Arm	3.2m
Safety	<ul style="list-style-type: none"> Boom and arm safety valves Komatsu Komvision surround view system LED Light pack Neutral position detection system ROPS compliant to ISO 12117-2:2008
Attachments	Hills Tefra Quick hitch (EC300 pick-up)
Lynch Additional Specification	<ul style="list-style-type: none"> White noise travel alarm Green seat belt warning light Amber beacon Red seat belt Boxing ring Signwriting Komtrax Telematics Hi Viz handrails and steps Lift certification
Available Options	<ul style="list-style-type: none"> HVO Fuel Compatible Machine Control (Leica & Trimble) Height & Slew restrictors (GKD & X Watch)

Dimensions & Performance Figures

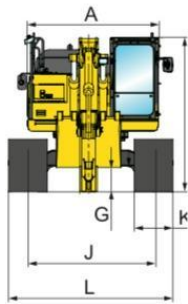
OPERATING WEIGHT (APPR.)

Triple grouser shoes 700 mm	Operating weight 30.350 kg	Ground pressure 0.49 kg/cm ²
--------------------------------	-------------------------------	--

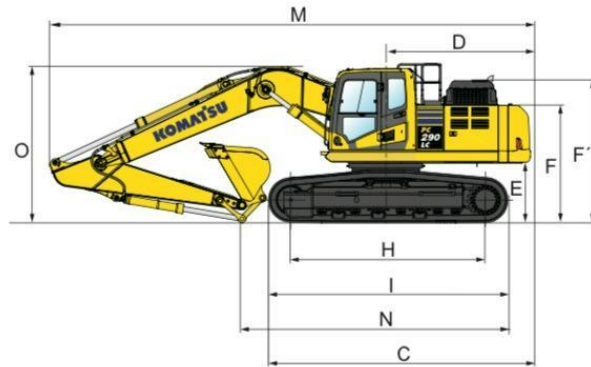
MACHINE DIMENSIONS

PC290LC-11

A	Overall width of upper structure	2705 mm
B	Overall height of cab	3180 mm
C	Overall length of basic machine	5460 mm
D	Tail length	2985 mm
	Tail swing radius	3020 mm
E	Clearance under counterweight	1215 mm
F	Machine tail height	2380 mm
F'	Machine tail height (top of engine cover)	2895 mm
G	Ground clearance	495 mm
H	Tumbler centre distance	4030 mm
I	Track length	4955 mm
J	Track gauge	2590 mm
K	Track shoe width	700 mm
L	Overall track width with 700 mm shoes	3290 mm



Mono boom



TRANSPORT DIMENSIONS

MONO BOOM

M	Transport length	10265 mm
N	Length on ground (transport)	5625 mm
O	Overall height (to top of boom)	3340 mm

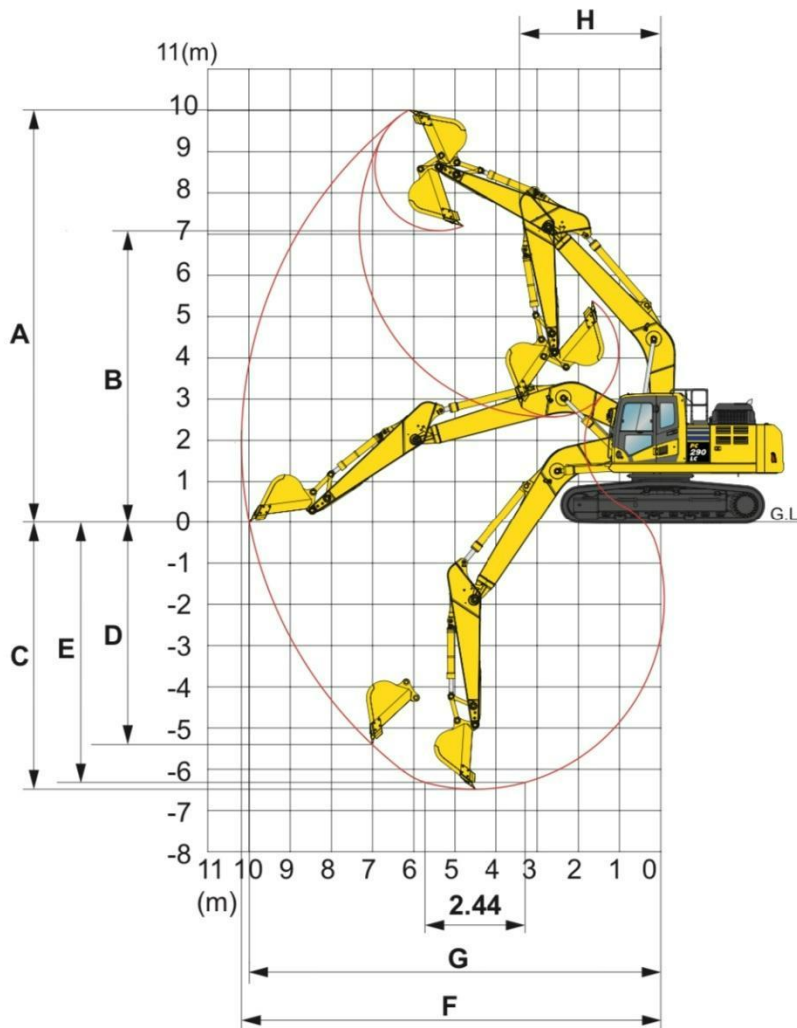
PC290LC-11 / MAX. BUCKET CAPACITY AND WEIGH

Material weight up to 1,2 t/m ³	2.02 m ³ 1.400 kg
Material weight up to 1,5 t/m ³	1.98 m ³ 1.300 kg
Material weight up to 1,8 t/m ³	1.50 m ³ 1.200 kg

BUCKET AND ARM FORCE

Bucket digging force	18800 kg
Bucket digging force at Power Max	20200 kg
Arm crowd force	13420 kg
Arm crowd force at Power Max	14370 kg

Working Range














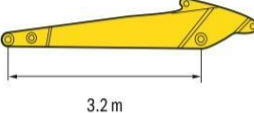
A	Max. digging height	10345 mm
B	Max. dumping height	7370 mm
C	Max. digging depth	6915 mm
D	Max. vertical wall digging depth	6135 mm
E	Max. digging depth of cut for 2,44 m level	6755 mm
F	Max. digging reach	10635 mm
G	Max. digging reach at ground level	10455 mm
H	Min. swing radius	3680 mm

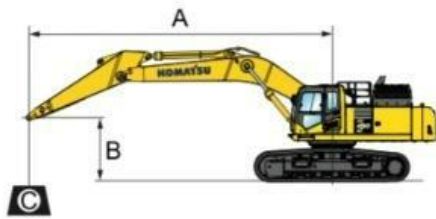
Lifting Capacity

PC290LC-11 Mono boom

With 700 mm shoes

Arm length	A		7.5 m		6.0 m		4.5 m		3.0 m		1.5 m	
	B											

	6.0 m	kg	*4550	*4550	*6830	6080	*7430	*7430				
	4.5 m	kg	*4550	*4550	*7660	5960	*8420	8280	*9920	*9920		
	3.0 m	kg	*4700	4420	*8310	5780	*9740	7910	*12680	11950		
	1.5 m	kg	*5000	4310	8460	5590	*10990	7560	*15010	11230		
	0.0 m	kg	*5530	4380	8300	5450	11500	7310	*16130	10860		
	-1.5 m	kg	*6430	4680	8230	5380	11360	7200	*16140	10750	*12270	*12270
	-3.0 m	kg	8130	5340	8270	5420	11370	7210	*15180	10810	*18780	*18780
	-4.5 m	kg	*8810	6860			*9630	7380				



A – Reach from swing centre
 B – Bucket hook height
 C – Lifting Capacities

-  – Rating over front
-  – Rating over side
-  – Rating at maximum reach

* Load is limited by hydraulic capacity rather than tipping. Ratings are based on SAE Standard No. J1097. Rated loads do not exceed 87% of hydraulic lift capacity or 75% of tipping load. Lifting capacity stated is based on lifting with bare arm. When lifting with additional equipment installed to the arm, please subtract the weight of all additional equipment from the values stated.