



## PC210LC-11 Super Long Front

### Specification

<b>Engine</b>	EU Stage V, Komatsu SAA6D107E-7 turbocharged common rail direct injection diesel engine, 123Kw/165hp
<b>Hydraulics</b>	Electronic closed-centre load sensing system
<b>Aux circuit</b>	Tilt control (1" ff Male couplings & ½" ff female pilot line)
<b>Boom</b>	8.795m Mono boom
<b>Arm</b>	7.395m
<b>Safety</b>	<ul style="list-style-type: none"> <li>Boom and arm safety valves</li> <li>Komatsu Komvision surround view system</li> <li>LED Light pack</li> <li>Neutral position detection system</li> <li>ROPS compliant to ISO 12117-2:2008</li> </ul>
<b>Attachments</b>	Hills Tefra Quick hitch (EC140 pick-up)
<b>Lynch Additional Specification</b>	<ul style="list-style-type: none"> <li>Bio hydraulic oil</li> <li>White noise travel alarm</li> <li>Green seat belt warning light</li> <li>Amber beacon</li> <li>Red seat belt</li> <li>Boxing ring</li> <li>Signwriting</li> <li>Komtrax Telematics</li> <li>Hi Viz handrails and steps</li> <li>Lift certification</li> </ul>
<b>Available Options</b>	<ul style="list-style-type: none"> <li>HVO Fuel Compatible</li> <li>Machine Control (Leica &amp; Trimble)</li> <li>Height &amp; Slew restrictors ( GKD &amp; X Watch</li> </ul>

# Dimensions & Performance Figures

## OPERATING WEIGHT (APPR.)

Triple grouser shoes  
700 mm

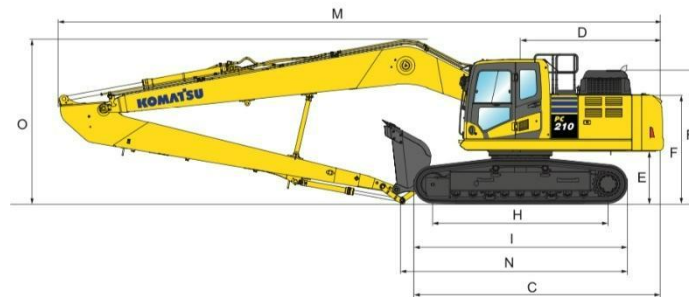
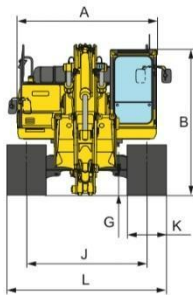
Operating weight  
23,740 kg

Ground pressure  
0.42 kg/cm<sup>2</sup>

## MACHINE DIMENSIONS

## PC210LC-11SLF

A	Overall width of upper structure	2705 mm
B	Overall height of cab	3045 mm
C	Over length of basic machine	5215 mm
D	Tail Length	2990 mm
	Tail swing radius	3020 mm
E	Clearance under counterweight	1085 mm
F	Machine tail height	2250 mm
G	Ground clearance	440 mm
H	Tumbler centre distance	3655 mm
I	Track length	4450 mm
J`	Track gauge	2380 mm
K	Shoe width	700 mm
L	Overall track width	3080 mm

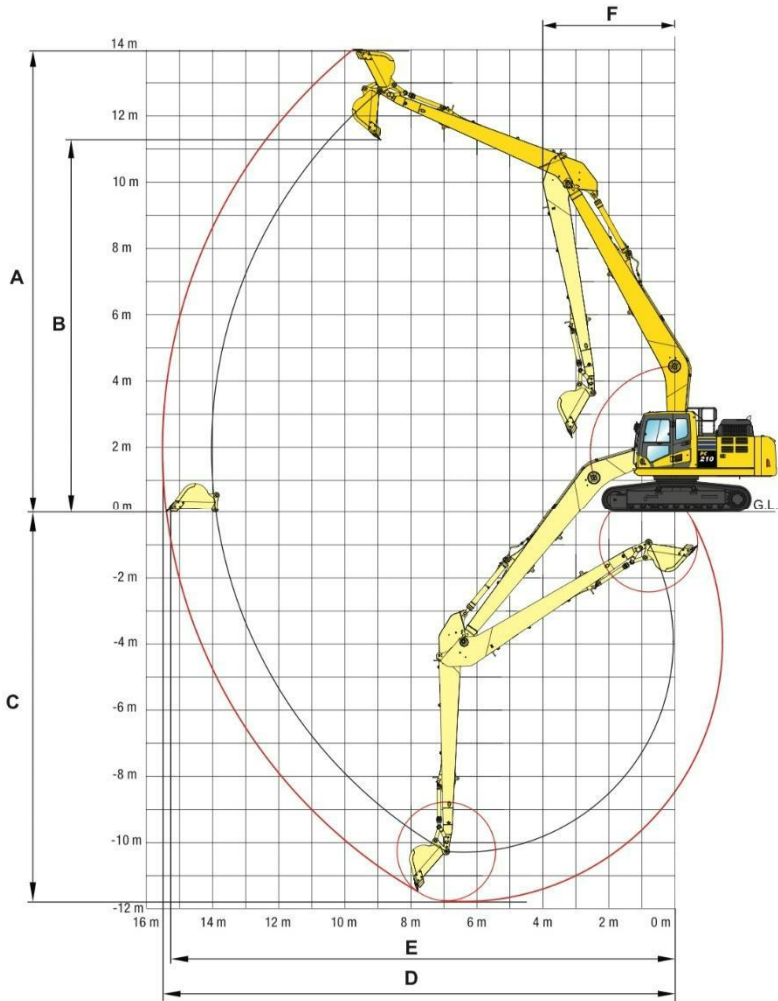


## TRANSPORT DIMENSIONS

## MONO BOOM

M	Transport length	12590 mm
N	Length on ground (transport)	4705 mm
O	Overall height (to top of boom)	3560 mm

# Working Range

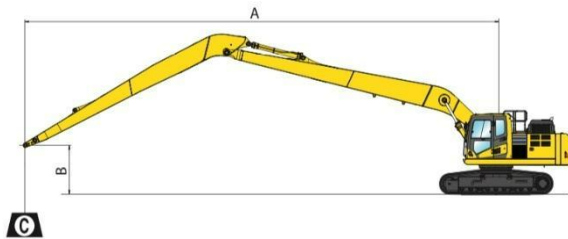


<b>A</b>	Max. digging height	13980 mm
<b>B</b>	Max. dumping height	11240 mm
<b>C</b>	Max. digging depth	11790 mm
<b>D</b>	Max. digging reach	15435 mm
<b>E</b>	Max. digging reach at ground level	15340 mm
<b>F</b>	Min. swing radius	4000 mm



# Lifting Capacity

A	⊙		13.0 m		12.0 m		11.0 m		10.0 m		9.0 m		8.0 m		7.0 m		6.0 m		
	⊙	⊙	⊙	⊙	⊙	⊙	⊙	⊙	⊙	⊙	⊙	⊙	⊙	⊙	⊙	⊙	⊙	⊙	
10.0 m	kg	*1300	*1300				*1800	*1800	*2000	*2000									
9.0 m	kg	*1300	*1300				*2100	*2100	*2000	*2000									
6.0 m	kg	*1250	*1250	*1850	1750	*2250	2050	*2300	*2300	*2300	*2300	*2350	*2350						
3.0 m	kg	*1350	*1350	*2500	1650	*2600	1900	*2700	2200	*2850	2600	*3050	*3050	*3350	*3350	*3700	*3700	*4250	*4250
0.0 m	kg	*1550	1300	2450	1500	2800	1700	*3150	2000	*3450	2300	*3850	2700	*4350	3200	*5050	3850	*6100	4700
-3.0 m	kg	*2000	1400	2350	1400	2650	1600	3000	1850	3450	2100	4000	2450	4750	2900	5750	3450	*6950	4250
-6.0 m	kg	2800	1700					3000	1800	3400	2050	3950	2400	4650	2850	5650	3400	*6900	4250
-9.0 m	kg	*3700	2650											*4250	3050	*4950	3650	*5800	4550



**A – Reach from swing centre**  
**B – Bucket hook height**  
**C – Lifting Capacities, including (195kg) bucket linkage and bucket cylinder**

 – Rating over front  
 – Rating over side  
 – Rating at maximum reach

\* Load is limited by hydraulic capacity rather than tipping. Ratings are based on SAE Standard No. J1097. Rated loads do not exceed 87% of hydraulic lift capacity or 75% of tipping load. Lifting capacity stated is based on lifting with bare arm. When lifting with additional equipment installed to the arm, please subtract the weight of all additional equipment from the values stated.