



## PC210LC-11

### Specification

<b>Engine</b>	EU Stage V, Komatsu SAA6D107E-7 turbocharged common rail direct injection diesel engine, 123Kw/165hp
<b>Hydraulics</b>	Electronic closed-centre load sensing system
<b>Aux circuit</b>	Hammer & Rotate (1" ff Male couplings & ½" ff female pilot line)
<b>Boom</b>	Mono boom
<b>Arm</b>	2.9m
<b>Safety</b>	<ul style="list-style-type: none"> <li>Boom and arm safety valves</li> <li>Komatsu Komvision surround view system</li> <li>LED Light pack</li> <li>Neutral position detection system</li> <li>ROPS compliant to ISO 12117-2:2008</li> </ul>
<b>Attachments</b>	Hills Tefra Quick hitch (EC220 pick-up)
<b>Lynch Additional Specification</b>	<ul style="list-style-type: none"> <li>White noise travel alarm</li> <li>Green seat belt warning light</li> <li>Amber beacon</li> <li>Red seat belt</li> <li>Boxing ring</li> <li>Signwriting</li> <li>Komtrax Telematics</li> <li>Hi Viz handrails and steps</li> <li>Lift certification</li> </ul>
<b>Available Options</b>	<ul style="list-style-type: none"> <li>HVO Fuel Compatible</li> <li>Machine Control (Leica &amp; Trimble)</li> <li>Height &amp; Slew restrictors ( GKD &amp; X Watch)</li> </ul>

# Dimensions & Performance Figures

## OPERATING WEIGHT (APPR.)

Triple grouser shoes  
700 mm

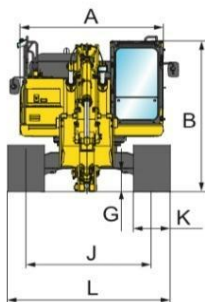
Operating weight  
22,720 kg

Ground pressure  
0.41 kg/cm<sup>2</sup>

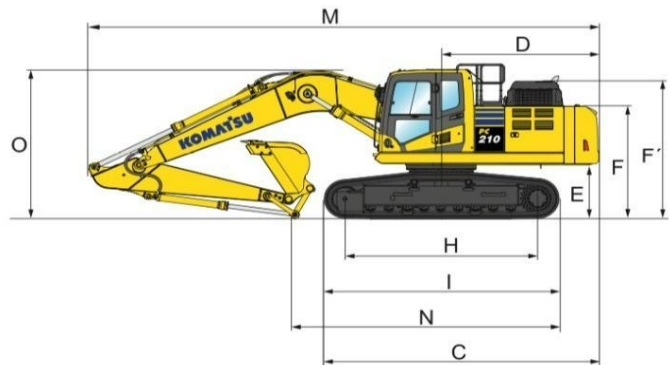
## MACHINE DIMENSIONS

## PC210LC-11

A	Overall width of upper structure	2705 mm
B	Overall height of cab	3045 mm
C	Overall length of basic machine	5215 mm
D	Tail length	2990 mm
	Tail swing radius	3020 mm
E	Clearance under counterweight	1085 mm
F	Machine tail height	2250 mm
F'	Machine tail height (top of engine cover)	2765 mm
G	Ground clearance	440 mm
H	Tumbler centre distance	3655 mm
I	Track length	4450 mm
J	Track gauge	2380 mm
K	Track shoe width	700 mm
L	Overall track width with 700 mm shoes	3080 mm



## Mono boom



## TRANSPORT DIMENSIONS

## MONO BOOM

M	Transport length	9705 mm
N	Length on ground (transport)	4810 mm
O	Overall height (to top of boom)	3135 mm

## PC210LC-11 / MAX. BUCKET CAPACITY AND WEIGH

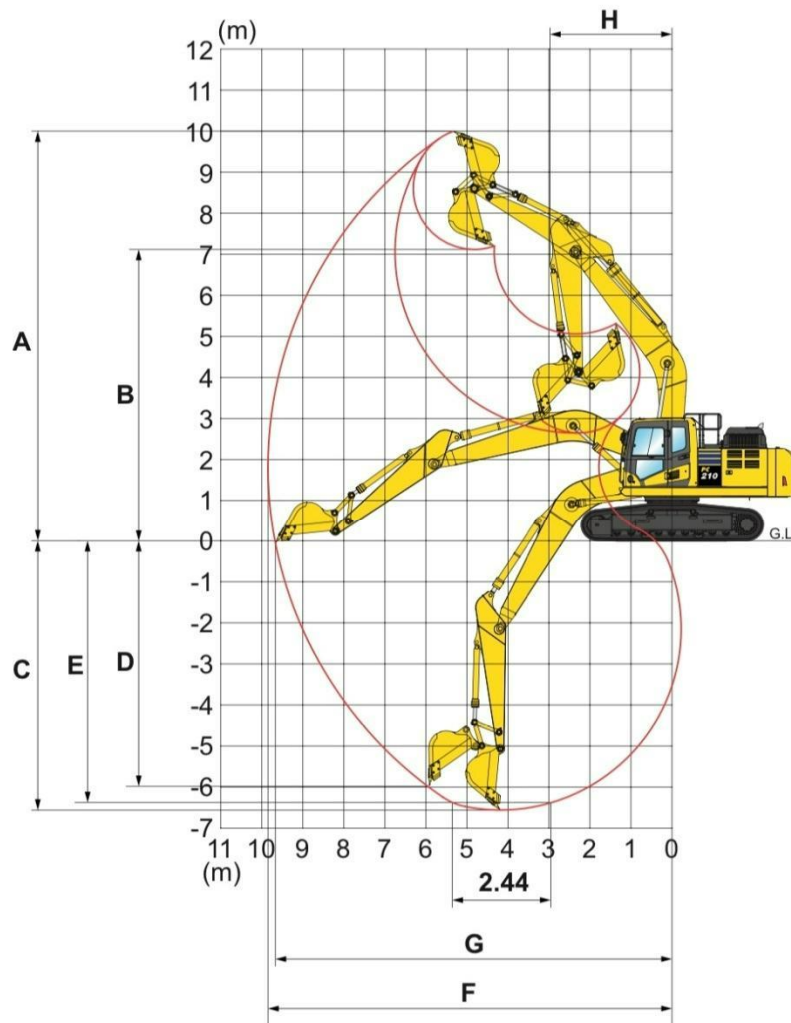
Material weight up to 1,2 t/m <sup>3</sup>	1.65 m <sup>3</sup> 1.150 kg
Material weight up to 1,5 t/m <sup>3</sup>	1.40 m <sup>3</sup> 1.025 kg
Material weight up to 1,8 t/m <sup>3</sup>	1.22 m <sup>3</sup> 925 kg

## BUCKET AND ARM FORCE

Bucket digging force	14100 kg
Bucket digging force at Power Max	15200 kg
Arm crowd force	10300 kg
Arm crowd force at Power Max	11000 kg



# Working Range













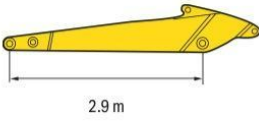


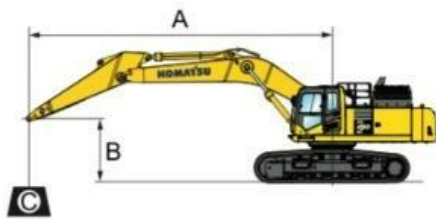
<b>A</b>	Max. digging height	10000 mm
<b>B</b>	Max. dumping height	7110 mm
<b>C</b>	Max. digging depth	6620 mm
<b>D</b>	Max. vertical wall digging depth	5980 mm
<b>E</b>	Max. digging depth of cut for 2,44 m level	6370 mm
<b>F</b>	Max. digging reach	8875 mm
<b>G</b>	Max. digging reach at ground level	9700 mm
<b>H</b>	Min. swing radius	3040 mm

# Lifting Capacity

## PC210LC-11 Mono boom

With 700 mm shoes

Arm length	A		7.5 m		6.0 m		4.5 m		3.0 m		1.5 m			
	B													
	7.5 m	kg	*4060	*4060			*4660	*4660						
	6.0 m	kg	*3820	*3820			*6500	5840						
	4.5 m	kg	*3800	3700	*5770	4050	*7210	5670	*8140	*8140				
	3.0 m	kg	*3930	3400	5890	3940	8260	5430	*10510	8180				
	1.5 m	kg	*4210	3290	5760	3820	7980	5180	12560	7660				
	0.0 m	kg	*4720	3350	5650	3730	7780	5000	12210	7370	*7200	*7200		
	-1.5 m	kg	5480	3620	5620	3700	7690	4920	12100	7280	*11680	*11680	*7480	*7480
	-3.0 m	kg	6520	4250			7730	4950	12170	7340	*17930	14040	*12100	*12100
	-4.5 m	kg	*8800	5940					*10890	7560	*15170	14430		



A – Reach from swing centre  
 B – Bucket hook height  
 C – Lifting Capacities

 – Rating over front  
 – Rating over side  
 – Rating at maximum reach

\* Load is limited by hydraulic capacity rather than tipping. Ratings are based on SAE Standard No. J1097. Rated loads do not exceed 87% of hydraulic lift capacity or 75% of tipping load. Lifting capacity stated is based on lifting with bare arm. When lifting with additional equipment installed to the arm, please subtract the weight of all additional equipment from the values stated.