



CASE
CONSTRUCTION

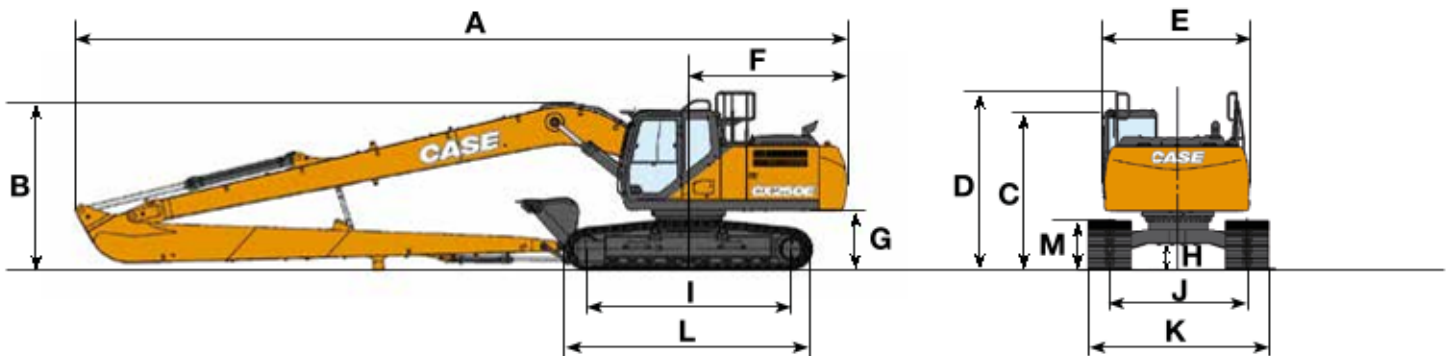
E-SERIES CRAWLER EXCAVATORS



CX250E | CX300E

SPECIFICATIONS

CX250E LONG REACH



GENERAL DIMENSIONS

Arm 8.00 m

| | | |
|--|----|-------|
| Overall length (without attachment) | mm | 5320 |
| A Overall length (with attachment) | mm | 14380 |
| B Overall height (to top of boom) | mm | 3130 |
| C Cab height | mm | 3220 |
| D Overall height (to top of handrail) | mm | 3220 |
| E Upper structure overall width | mm | 2770 |
| F Swing (rear end radius) | mm | 2950 |
| G Clearance height under upper structure | mm | 1100 |
| H Minimum ground clearance | mm | 440 |
| I Wheel base (Center to center of wheels) | mm | 3840 |
| J Track gauge | mm | 2590 |
| K Undercarriage overall width (LC with 800 mm shoes) | mm | 3390 |
| L Crawler overall length | mm | 4650 |
| M Crawler tracks height | mm | 940 |

DIGGING FORCE (ISO 6015)

Arm 8.00 m

| | |
|----------------------|---------|
| Arm digging force | 40.0 kN |
| Bucket digging force | 77 kN |

PERFORMANCE DATA

Arm 8.00 m

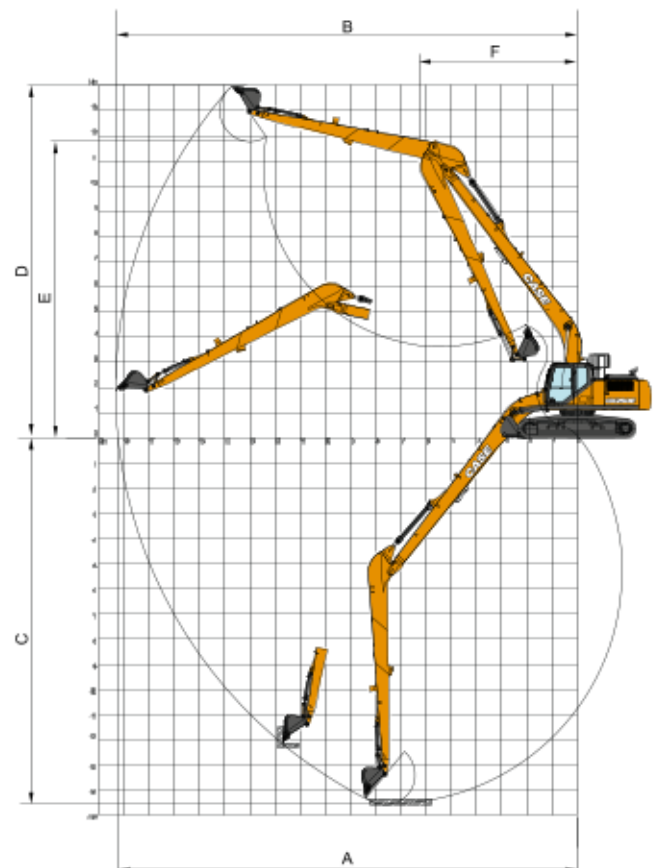
| | | |
|------------------------|----|-------|
| Boom length | mm | 10300 |
| Bucket radius | mm | 1200 |
| Bucket wrist action | ° | 178 |
| A Maximum reach at GRP | mm | 18220 |
| B Maximum reach | mm | 18320 |
| C Max. digging depth | mm | 14560 |
| D Max. digging height | mm | 13950 |
| E Max. dumping height | mm | 11780 |
| F Min. swing radius | mm | 6220 |

WEIGHT AND GROUND PRESSURE

With 8.00 m arm, 0.37 m³ bucket, operator, lubricant, coolant, full fuel tank and FOPS protection level 2.

| | Weight | Ground pressure |
|----------------------|----------|-----------------|
| 800 mm grouser shoes | 28300 kg | 0.043 MPa |

Counterweight 7350 kg



LIFTING CAPACITY (PRELIMINARY)

CX250E LONG REACH

| | | REACH | | | | | | | | | | |
|-------|------|-------|-------|-------|-------|-------|--------|--------|--------|--------|--------------|---|
| Front | Side | 0.0 m | 2.0 m | 4.0 m | 6.0 m | 8.0 m | 10.0 m | 12.0 m | 14.0 m | 16.0 m | At max reach | m |

LC UNDERCARRIAGE - Super long arm 8.00 m, 800 mm shoes, max reach 17.10 m

| | | | | | | | | | | | | | | | | | | | | | |
|---------|-------|-------|-------|-------|-------|-------|-------|-------|-------|-------|-------|-------|-------|-------|-------|------|-------|------|-------|-------|-------|
| 12.0 m | | | | | | | | | | | 1750* | 1750* | 13.79 | | | | | | | | |
| 10.0 m | | | | | | | | | 1980* | 1980* | | | 15.06 | | | | | | | | |
| 8.0 m | | | | | | | | | 2040* | 2040* | | | 15.98 | | | | | | | | |
| 6.0 m | | | | | | | | 2260* | 2260* | 2170* | 2170* | 2120* | 1660 | 16.61 | | | | | | | |
| 4.0 m | | | | | | | 2830* | 2830* | 2540* | 2540* | 2340* | 2090 | 2220* | 1580 | 1790* | 1370 | 16.98 | | | | |
| 2.0 m | | | 4250* | 4250* | 5590* | 5590* | 4090* | 4090* | 3310* | 3310* | 2850* | 2550 | 2550* | 1940 | 2330 | 1490 | 1900* | 1280 | 17.11 | | |
| 0 m | | | 2400* | 2400* | 6850* | 6000 | 4830* | 4150 | 3780* | 3060 | 3160* | 2330 | 2750* | 1800 | 2240 | 1400 | 2010 | 1240 | 17.01 | | |
| -2.0 m | | 1530* | 1530* | 2600* | 2600* | 5540* | 5410 | 5400* | 3740 | 4170* | 2780 | 3350 | 2140 | 2670 | 1680 | 2170 | 1330 | 2030 | 1240 | 16.66 | |
| -4.0 m | 2050* | 2050* | 2260* | 2260* | 3200* | 3200* | 5560* | 5150 | 5630 | 3510 | 4140 | 2600 | 3220 | 2020 | 2580 | 1600 | 2130 | 1300 | 2120 | 1290 | 16.06 |
| -6.0 m | 2670* | 2670* | 3020* | 3020* | 4000* | 4000* | 6260* | 5100 | 5530 | 3420 | 4050 | 2520 | 3150 | 1950 | 2550 | 1570 | | | 2290 | 1400 | 15.17 |
| -8.0 m | 3360* | 3360* | 3850* | 3850* | 4980* | 4980* | 7460* | 5200 | 5560 | 3440 | 4060 | 2520 | 3160 | 1960 | | | | | 2600 | 1620 | 13.97 |
| -10.0 m | | 4810* | 4810* | 6120* | 6120* | 7140* | 5420 | 5390* | 3570 | 4160 | 2620 | 3270 | 2070 | | | | | | 3190 | 2020 | 12.26 |
| -12.0 m | | | 7880* | 7880* | 5950* | 5790 | 4520* | 3840 | | | | | | | | | | | 3470* | 2890 | 9.91 |

BUCKETS

CX250E LONG REACH

DIRECT FIT (PRELIMINARY)



| Capacity m ³ (ISO7451 HEAPED) | Width mm | Weight kg | Arm 8.00 m |
|---|-------------|--------------|---------------|
| GENERAL PURPOSE BUCKETS | | | |
| 0.21 | 450 | 250 | ○ |
| 0.31 | 600 | 290 | ○ |
| 0.41 | 750 | 330 | ○ |
| 0.52 | 900 | 360 | ● |
| DITCH CLEANING BUCKETS | | | |
| 0.54 (**) | 1830 | 350 | ● |
| | | 4810 (*) | ● |
| 90° TILT DITCH CLEANING BUCKET | | | |
| 0.46 | 1500 | 640 | ■ |

Tilt angle 45° L/R - Connect to Low-Flow Auxiliary Hydraulic Circuit

* with bolt-on cutting edge

○ Rated material density up to 2 ton/m³

● Rated material density up to 1.6 ton/m³

QUICK COUPLED (PRELIMINARY)



| Capacity m ³ (ISO7451 HEAPED) | Width mm | Weight kg | Arm 8.00 m |
|---|-------------|--------------|---------------|
| GENERAL PURPOSE BUCKETS | | | |
| 0.21 | 450 | 250 | ○ |
| 0.31 | 600 | 280 | ○ |
| 0.41 | 750 | 310 | ○ |
| 0.52 | 900 | 360 | ■ |
| DITCH CLEANING BUCKETS | | | |
| 0.54 (**) | 1830 | 350 | ■ |
| | | 500 (*) | ■ |

(**) to be removed for road transport with 3.52 m arm

■ Rated material density up to 1.2ton/m³

— Not applicable