



CASE
CONSTRUCTION

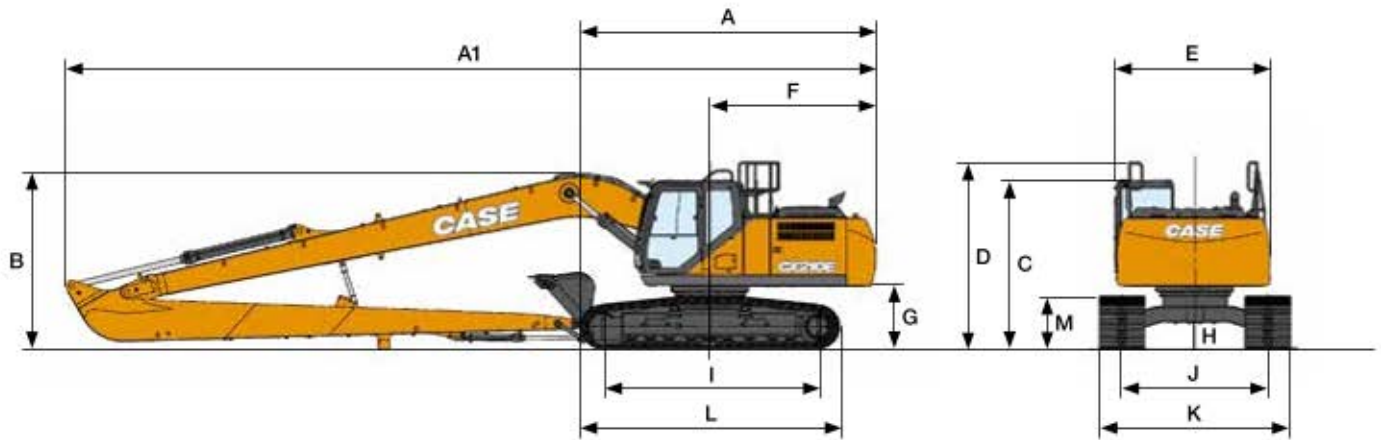
E-SERIES CRAWLER EXCAVATORS



CX210E

SPECIFICATIONS

CX210E LONG REACH



GENERAL DIMENSIONS LONG REACH		Arm 6.40 m	
A	Overall length (without attachment)	mm	5050
A1	Overall length (with attachment)	mm	12580
B	Overall height (to top of boom)	mm	3040
C	Cab height	mm	3070
D	Overall height (to top of guardrail)	mm	3150
E	Upper structure overall width	mm	2760
F	Swing (rear end radius)	mm	2830
G	Clearance height under upper structure	mm	1040
H	Minimum ground clearance	mm	440
I	Wheel base (Center to center of wheels)	mm	3660
J	Track gauge	mm	2390
K	Undercarriage overall width (with 800 mm shoes)	mm	3190
L	Crawler overall length	mm	4470
M	Crawler tracks height	mm	920

DIGGING FORCE (ISO 6015)		Arm 6.40 m	
Arm digging force	kN	46	
with auto power boost	kN	50	
Bucket digging force	kN	65	
with auto power boost	kN	70	

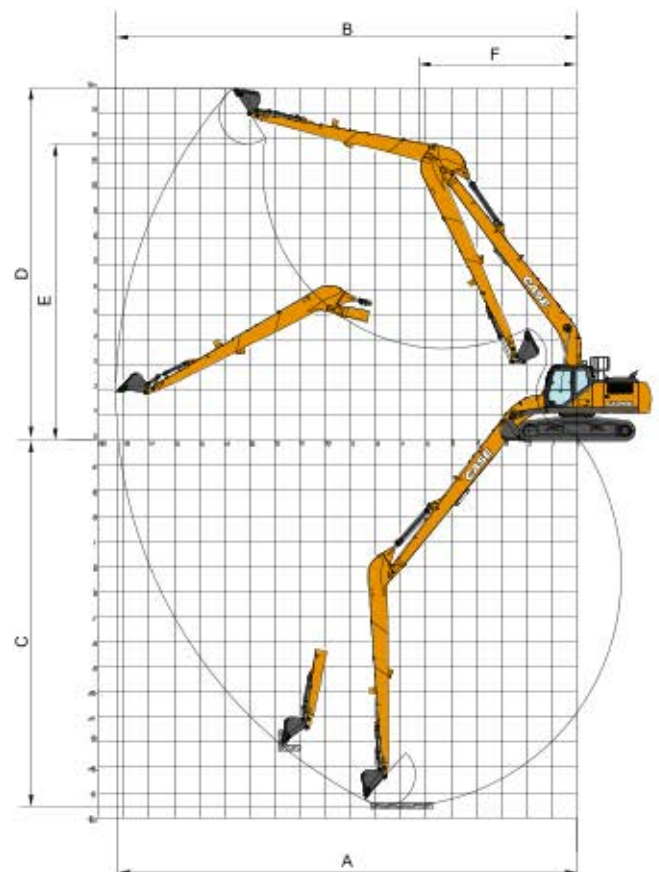
PERFORMANCE DATA		Arm 6.40 m	
Boom length	mm	8700	
Bucket radius	mm	1200	
Bucket wrist action	°	178	
A	Maximum reach at GRP	mm	15490
B	Maximum reach	mm	15600
C	Max. digging depth	mm	12010
D	Max. digging height	mm	12970
E	Max. dumping height	mm	10730
F	Min. swing radius	mm	5220

WEIGHT AND GROUND PRESSURE

With 6.40 m arm, 0.37 m³ bucket, 800 mm grouser shoes, operator, lubricant, coolant, full fuel tank and FOPS protection level 2.

	WEIGHT	GROUND PRESSURE
LR	23800 kg	0.037 MPa

Counterweight: 4700 kg



LIFTING CAPACITY

CX210E LONG REACH



LC UNDERCARRIAGE - Super long arm 6.40 m, 800 mm shoes, max reach 14.40 m

REACH	0.0 m	2.0 m	4.0 m	6.0 m	8.0 m	10.0 m	12.0	14.0	At max reach	m
10.0 m									1360* 1360*	11.83
8.0 m							2130* 2060		1310* 1310*	13
6.0 m						2290* 2290*	2230* 2000		1300* 1300*	13.78
4.0 m					2950* 2950*	2620* 2620*	2420* 1890	1740* 1370	1340* 1320	14.23
2.0 m			6940* 6940*	4820* 4820*	3620* 3380	3000* 2400	2650* 1760	2130 1310	1410* 1240	14.4
0 m			3660* 3660*	5910* 4420	4240* 3020	3380* 2190	2630 1640	2060 1250	1540* 1200	14.28
-2.0 m		2280* 2280*	3940* 3940*	6570* 4060	4510 2770	3300 2030	2540 1550		1730* 1230	13.88
-4.0 m	2950* 2950*	3330* 3330*	4890* 4890*	6640 3920	4370 2650	3210 1950	2490 1500		2040* 1320	13.16
-6.0 m	3840* 3840*	4470* 4470*	6230* 6230*	6670 3940	4360 2630	3200 1940	2520 1530		2500 1520	12.07
-8.0 m		5800* 5800*	8080* 7610	6110* 4090	4470 2730	3300 2040			3110 1930	10.49
-10 m			6840* 6840*	4850* 4410	3470* 2990				3370* 2930	8.14

* The above loads (kg) are compliant to the ISO standards and refer to the excavator equipped without bucket. The indicated loads are no more than 87% of hydraulic system lift capacity or 75% of static tipping load. Values marked with an asterisk (*) are limited by the hydraulic lifting capacity.

BUCKETS

CX210E LONG REACH



DIRECT FIT

Capacity m ³ (ISO7451 HEAPED)	Width mm	Weight kg	Arm 6.40 m
GENERAL PURPOSE BUCKETS			
0.21	450	250	○
0.31	600	290	○
0.41	750	330	○
0.52	900	360	●

Capacity m ³ (ISO7451 HEAPED)	Width mm	Weight* kg	Arm 6.40 m
GRADING BUCKETS			
0.59	1500	440	■

Capacity m ³ (ISO7451 HEAPED)	Width mm	Weight* kg	Arm 6.40 m
DITCH CLEANING BUCKETS			
0.54	1830	480	▲

Capacity m ³ (ISO7451 HEAPED)	Width mm	Weight* kg	Arm 6.40 m
90° TILT DITCH CLEANING BUCKET			
0.46	1500	640	■

QUICK COUPLED

Capacity m ³ (ISO7451 HEAPED)	Width mm	Weight kg	Arm 6.40 m
GENERAL PURPOSE BUCKETS			
0.21	450	250	○
0.31	600	280	○
0.41	750	310	●
0.52	900	360	●

Capacity m ³ (ISO7451 HEAPED)	Width mm	Weight* kg	Arm 6.40 m
DITCH CLEANING BUCKET			
0.54	1830	370	■

* with bolt-on cutting edge



■ Rated material density up to 1.2 ton/m³
▲ Rated material density up to 1.4 ton/m³

● Rated material density up to 1.6 ton/m³
○ Rated material density up to 2 ton/m³