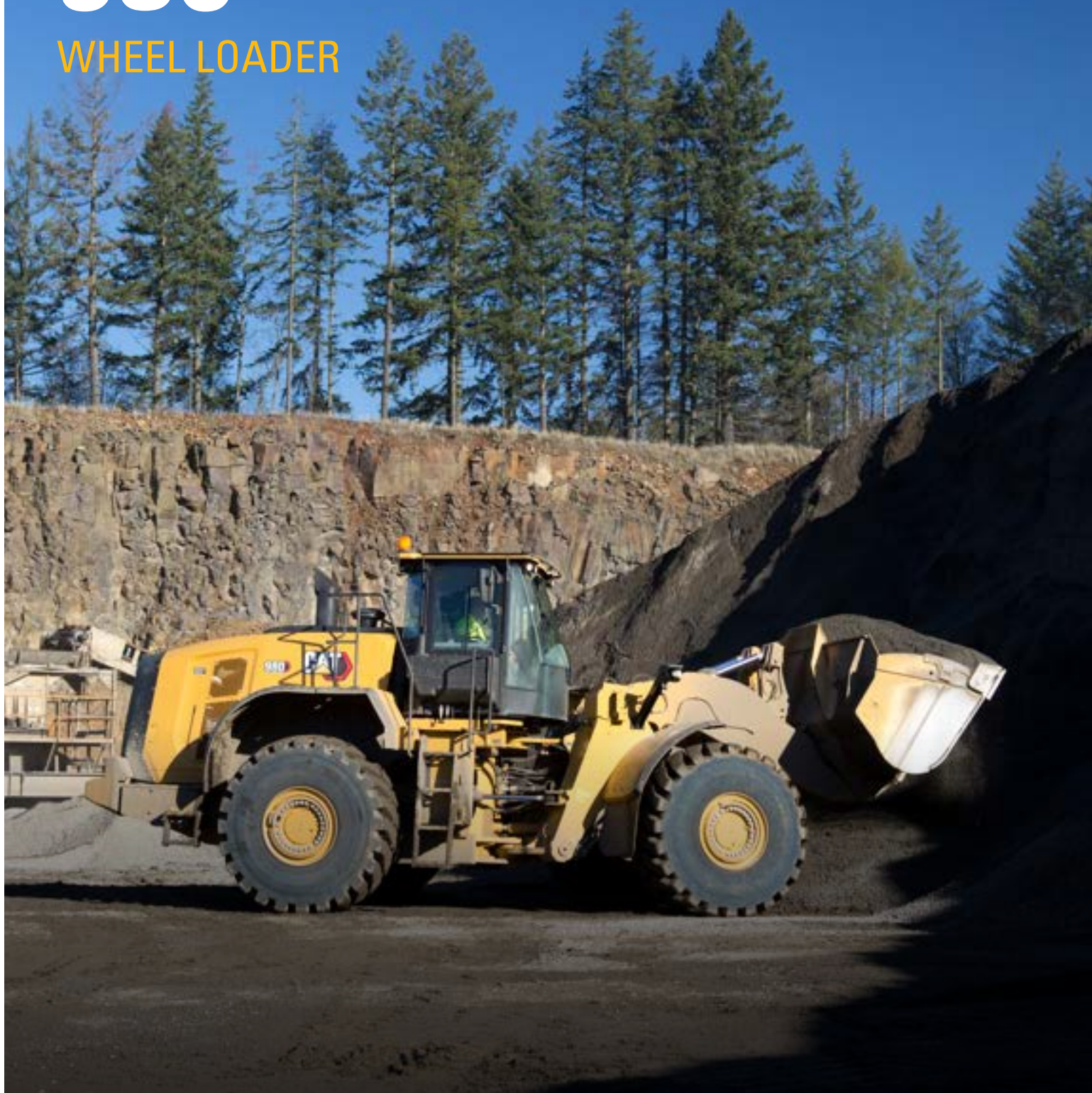


980

WHEEL LOADER



Engine Maximum Power
Operating Weight

313 kW (420 hp)
30 344 kg (66,877 lb)

Meets U.S. EPA Tier 4 Final, EU Stage V, Korea Tier 4 Final, and Japan 2014 emission standards.



TECHNICAL SPECIFICATIONS

See cat.com for complete specifications.

ENGINE		
Engine Model	Cat C13	
Engine Power @ 1,700 rpm – ISO 14396:2002	313 kW	420 hp
Gross Power @ 1,700 rpm – SAE J1995:2014	317 kW	425 hp
Net Power @ 1,700 rpm – ISO 9249:2007, SAE J1349:2011	293 kW	393 hp
Engine Torque @ 1,200 rpm – ISO 14396:2002	2185 N·m	1,612 lbf·ft
Gross Torque @ 1,200 rpm – SAE J1995:2014	2206 N·m	1,627 lbf·ft
Net Torque @ 1,100 rpm – ISO 9249:2007, SAE J1349:2011	2086 N·m	1,539 lbf·ft
Displacement	12.5 L	

- Cat engine meets U.S. EPA Tier 4 Final, EU Stage V, Korea Tier 4 Final, and Japan 2014 emission standards.
- The net power advertised is the power available at the flywheel when the engine is equipped with fan, alternator, air cleaner, and aftertreatment.

WEIGHTS			
Operating Weight	30 344 kg	66,877 lb	

- Weight based on a machine configuration with Bridgestone 29.5R25 VSNT L4 radial tires, full fluids, operator, standard counterweight, ride control cold start, roading fenders, Product Link, open differential axles (front/rear), secondary steering, sound suppression, and a 5.4 m³ (7.1 yd³) general purpose bucket with BOCE.

BUCKET CAPACITIES			
Bucket Range	4.0-14.5 m³	5.25-19.0 yd³	

TRANSMISSION					
Forward 1	6.9 km/h	4.3 mph	Reverse 1	7.8 km/h	4.8 mph
Forward 2	13.3 km/h	8.3 mph	Reverse 2	15.2 km/h	9.4 mph
Forward 3	23.5 km/h	14.6 mph	Reverse 3	26.9 km/h	16.7 mph
Forward 4	39.5 km/h	24.5 mph	Reverse 4	39.5 km/h	24.5 mph

- Maximum travel speed in standard vehicle with empty bucket and standard L4 tires with 935 mm (37 in) roll radius.

SOUND			
With Cooling Fan Speed at Maximum Value:			
Operator Sound Pressure Level (ISO 6396:2008)	72 dB(A)		
Exterior Sound Power Level (ISO 6395:2008)	112 dB(A)		
Exterior Sound Pressure Level (SAE J88:2013)	78 dB(A)*		

*Distance of 15 m (49.2 ft), moving forward in second gear ratio.

With Cooling Fan Speed at 70% of Maximum Value:**			
Operator Sound Pressure Level (ISO 6396:2008)	72 dB(A)		
Exterior Sound Power Level	109 dB(A)***		

**For machines in European Union countries and in countries that adopt the "EU Directives."

***European Union Directive "2000/14/EC" as amended by "2005/88/EC."

OPERATING SPECIFICATIONS			
Static Tipping Load – Full 40° Turn – with Tire Deflection	19 706 kg	43,432 lb	
Static Tipping Load – Full 40° Turn – No Tire Deflection	20 965 kg	46,208 lb	
Breakout Force	227 kN	51,008 lbf	

- For a machine configuration as defined under "Weight."
- Full compliance to ISO 14397-1:2007 Sections 1 thru 6, which requires 2% verification between calculations and testing.

SERVICE REFILL CAPACITIES			
Fuel Tank	426 L	112.5 gal	
DEF Tank	21 L	5.5 gal	
Cooling System	52 L	13.7 gal	
Crankcase	37 L	9.8 gal	
Transmission	77 L	20.3 gal	
Differentials and Final Drives – Front	84 L	22.2 gal	
Differentials and Final Drives – Rear	84 L	22.2 gal	
Hydraulic Tank	153 L	40.4 gal	

HYDRAULIC SYSTEM			
Implement System:			
Maximum Pump Output (2,250 rpm)	449 L/min	119 gal/min	
Maximum Operating Pressure	34 300 kPa	4,975 psi	
Hydraulic Cycle Time – Total	10.1 seconds		

DIMENSIONS				
	Standard Lift		High Lift	
Height to Top of Hood	3064 mm	10'1"	3064 mm	10'1"
Height to Top of Exhaust Pipe	3764 mm	12'5"	3764 mm	12'5"
Height to Top of ROPS	3829 mm	12'7"	3829 mm	12'7"
Ground Clearance	456 mm	1'5"	456 mm	1'5"
Center Line of Rear Axle to Edge of Counterweight	2661 mm	8'9"	2661 mm	8'9"
Center Line of Rear Axle to Hitch	1900 mm	6'3"	1900 mm	6'3"
Wheelbase	3800 mm	12'6"	3800 mm	12'6"
Overall Length (without bucket)	8155 mm	26'10"	8355 mm	27'5"
Hinge Pin Height at Maximum Lift	4554 mm	14'11"	4775 mm	15'7"
Hinge Pin Height at Carry	632 mm	2'0"	682 mm	2'2"
Lift Arm Clearance at Maximum Lift	3881 mm	12'8"	4125 mm	13'6"
Rack Back at Maximum Lift	61 degrees		61 degrees	
Rack Back at Carry Height	48 degrees		50 degrees	
Rack Back at Ground	40 degrees		40 degrees	
Width over Tires (Loaded)	3260 mm	10'9"	3260 mm	10'9"
Tread Width	2440 mm	8'0"	2440 mm	8'0"

- All dimensions are approximate and based on machine equipped with 5.4 m³ (7.1 yd³) general purpose bucket with BOCE and Bridgestone 29.5R25 VSNT L4 radial tires.

AIR CONDITIONING SYSTEM	
The air conditioning system on this machine contains the fluorinated greenhouse gas refrigerant R134a (Global Warming Potential = 1430). The system contains 1.6 kg (3.53 lb) of refrigerant which has a CO ₂ equivalent 2.288 metric tonnes (2.522 tons).	

STANDARD & OPTIONAL EQUIPMENT

Standard and optional equipment may vary. Consult your Cat dealer for details.

OPERATOR ENVIRONMENT	STANDARD	OPTIONAL
Cab, pressurized, sound suppression	•	
Door, remote opening system		•
EH implement controls, parking brake	•	
HMU steering wheel		•
Steering, joystick	•	
Entertainment radio		•
CB radio ready		•
Seat, cloth, air suspension	•	
Seat, suede/cloth, air suspension, heated		•
Seat, leather/cloth, air suspension, heated/cooled		•
Touchscreen display	•	
Visibility: mirrors, rear-vision camera	•	
Multiview (360 degree) vision system		•
Cat Detect rear radar system		•
Dedicated rearview screen		•
Mirrors, heated		•
Air conditioner, heater, defroster (auto temp, fan)	•	
Sun visor, front and rear, retractable	•	
Window cleaning standing surface, front	•	
Windows, front, safety laminated rounded glass	•	
Windows, front, heavy duty, or full guards		•
4-point seat belt (kit)		•
Fire extinguisher mount (kit)		•
ON-BOARD TECHNOLOGIES	STANDARD	OPTIONAL
Cat Payload scale	•	
Autodig with Auto Set Tires	•	
Operator ID & machine security	•	
Application Profiles	•	
Job Aids	•	
Controls Help and eOMM	•	
Cat Advanced Payload		•
Cat Payload Printer		•
POWER TRAIN	STANDARD	OPTIONAL
Cat C13 engine	•	
Electric fuel priming pump	•	
Fuel-water separator and secondary fuel filter	•	
Engine, air precleaner	•	
Turbine, air precleaner		•
Radiator, high debris		•
Cooling fan, reversible		•
Axles, open differentials	•	
Axles, limited slip differential(s)		•
Axles, ecology drains, AOC ready, extreme temperature seals		•
Axles, oil cooler		•
Transmission, planetary, automatic powershift	•	
Torque converter with lock-up	•	
Heavy Duty transmission		•

POWER TRAIN (CONTINUED)	STANDARD	OPTIONAL
Service brakes, hydraulic, fully enclosed wet disc, wear indicators	•	
Integrated Braking System (IBS)	•	
Park brake, caliper on front axles, spring applied–pressure released	•	
HYDRAULICS	STANDARD	OPTIONAL
Implement system, load sensing with variable displacement piston pump	•	
Steering system, load sensing with dedicated variable displacement piston pump	•	
Ride control, dual accumulators	•	
3 rd auxiliary function with ride control		•
Oil sampling valves, Cat XT™ hoses	•	
Quick coupler control		•
ELECTRICAL	STANDARD	OPTIONAL
Starting and charging system, 24V	•	
Starter, electric, heavy duty	•	
Cold start, 120V or 240V		•
Lights: halogen, 4 cab work lights, 2 front roading lights with turn signals, 2 rear hood work lights	•	
Lights: LED		•
Warning beacon		•
Reversing strobe lights		•
MONITORING SYSTEM	STANDARD	OPTIONAL
Front dash with analog gauges, LCD display, and warning lights	•	
Primary touchscreen monitor (Cat Payload, quad screens, machine settings & messages)	•	
LINKAGE	STANDARD	OPTIONAL
Standard lift, Z-bar	•	
High lift, Z-bar		•
Kickouts: lift and tilt	•	
ADDITIONAL EQUIPMENT	STANDARD	OPTIONAL
Cat Autolube system		•
Fenders, extensions or roading		•
Guards: power train, crankcase, cab, cylinders, rear		•
Biodegradable hydraulic oil		•
High-speed oil change system		•
Rear egress system		•
Fast fill fuel tank		•
Toolbox		•
Wheel chocks		•
Secondary steering system, electrical ¹		•
SPECIAL CONFIGURATIONS	STANDARD	OPTIONAL
Aggregate handler		•
Waste and scrap		•
Forestry		•
Steel mill		•
Block handler		•

¹ Standard in the EU/UK