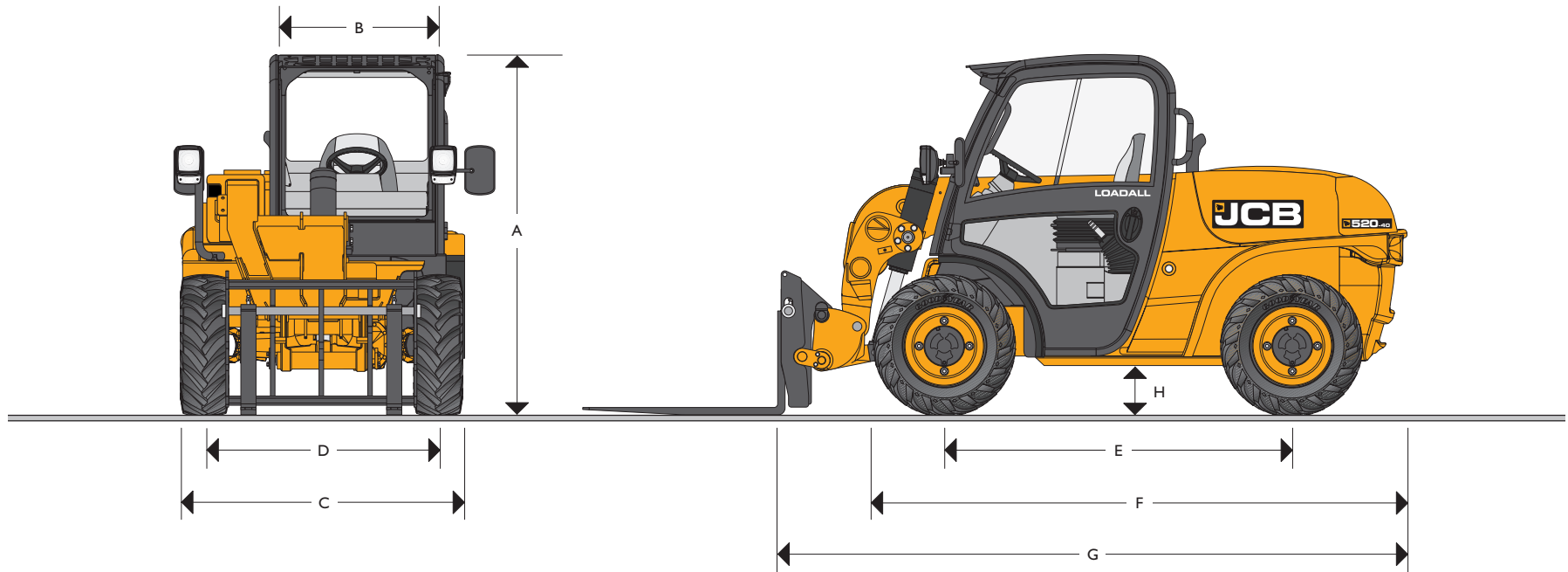




MAX PAYLOAD: 4,000 lb (1,814 kg) MAX LIFT HEIGHT: 13 ft 3 in (4.0 m) MAX HORSEPOWER: 49 hp (37 kW)

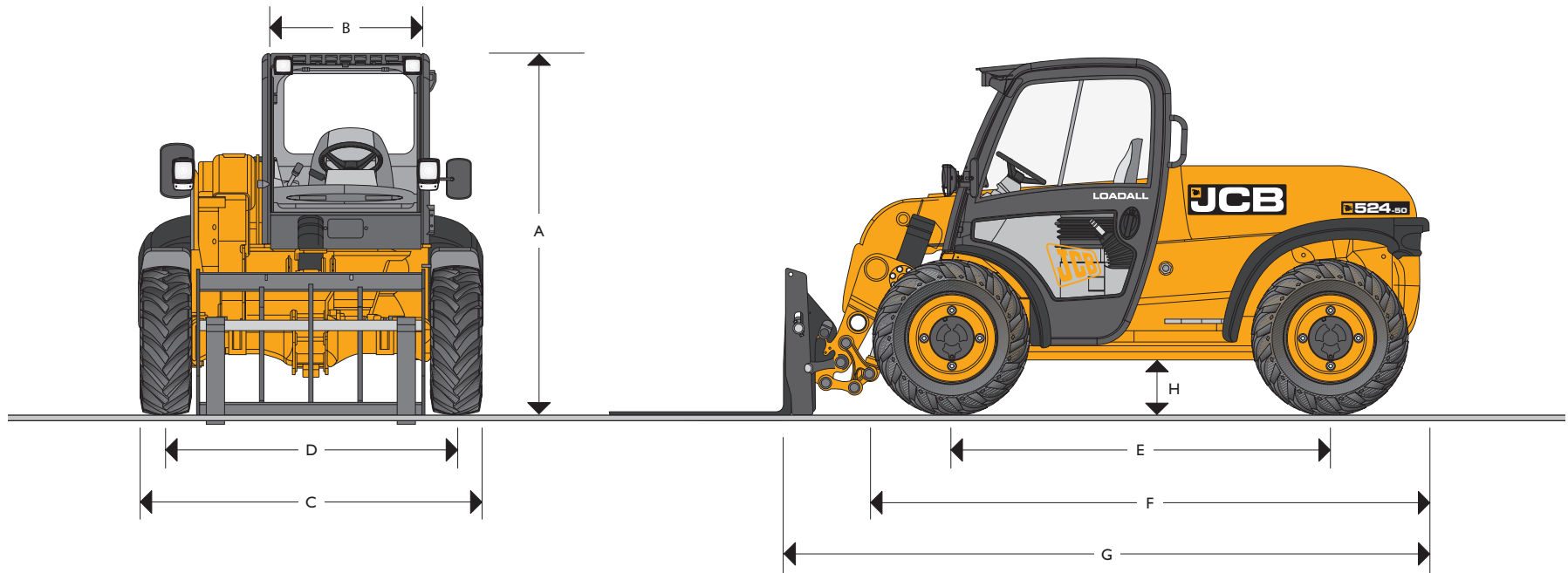


520-40 STATIC DIMENSIONS

	10.00 x 16.5 12 ply Tires	12.00 x 16.5 10 ply Tires		10.00 x 16.5 12 ply Tires	12.00 x 16.5 10 ply Tires
	ft-in (m)	ft-in (m)		ft-in (m)	ft-in (m)
A Overall Height	6-6 (1.97)	6-7 (2.01)	F Overall Length to Front of Tires	9-6 (2.92)	9-6 (2.92)
B Inside Width of Cab	3-0 (0.92)	3-0 (0.92)	G Overall Length to Front of Carriage	11-1 (3.38)	11-1 (3.38)
C Width Over Tires (Minimum)	5-1 (1.56)	5-8 (1.73)	H Ground Clearance	0-11 (0.27)	1-0 (0.3)
D Front Track	4-3 (1.29)	4-8 (1.41)	Outer Turn Radius Over Tires	10-0 (3.05)	10-0 (3.05)
E Wheelbase	6-3 (1.90)	6-3 (1.90)	Weight	9700 (4400)	9700 (4400)



MAX PAYLOAD: 5,000 lb (2,268 kg) MAX LIFT HEIGHT: 17 ft 4 in (5.3 m) MAX HORSEPOWER: 74 hp (55 kW)



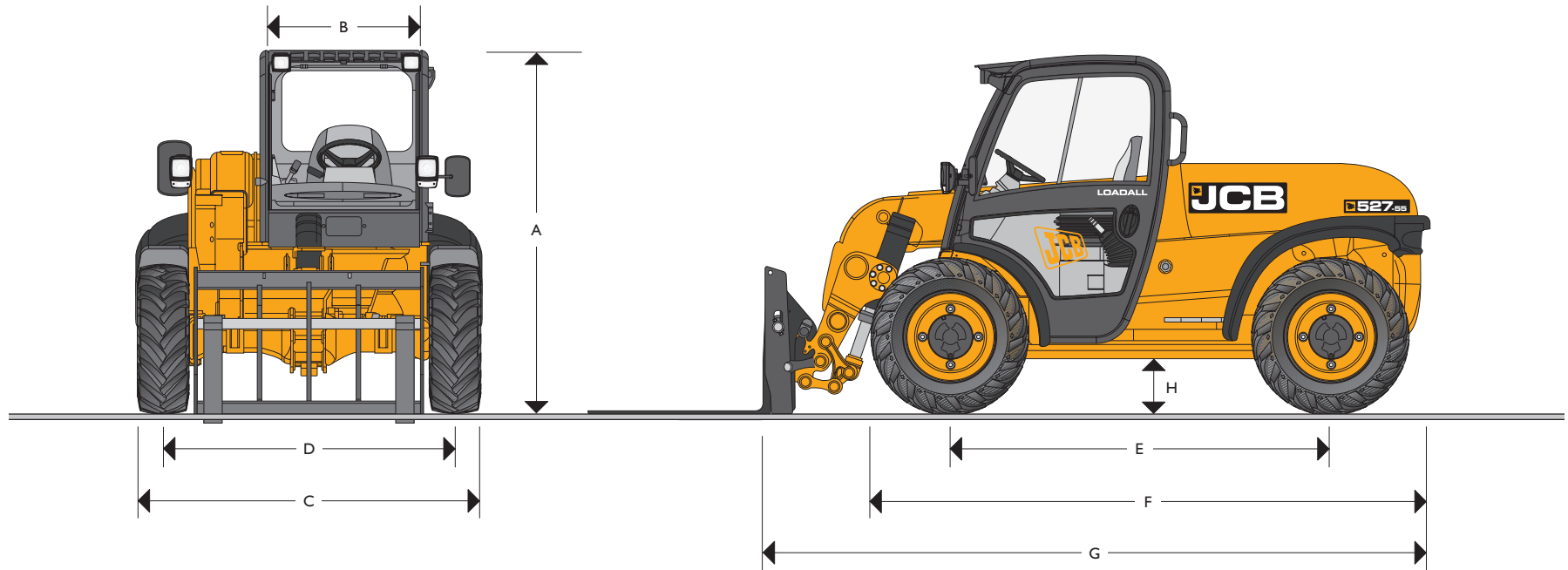
524-50 STATIC DIMENSIONS

Machine Model	524-50
	ft-in (m)
A Overall Height	6-11 (2.1)
B Inside Width of Cab	3-0 (0.92)
C Width Over Tires (Minimum)	6-7 (2.0)
D Front Track	5-7 (1.7)
E Wheelbase	7-6 (2.3)
F Overall Length to Front of Tires	11-2 (3.4)

Machine Model	524-50
	ft-in (m)
G Overall Length to Front of Carriage	12-10 (3.9)
H Ground Clearance	1-1 (0.33)
Outer Turn Radius Over Tires	9-10 (3.0)
Weight	lb (kg) 12,125 (5500)
Tires	12.5/80 x 18



MAX PAYLOAD: 6,000 lb (2,721 kg) MAX LIFT HEIGHT: 18 ft 4 in (5.6 m) MAX HORSEPOWER: 74 hp (55 kW)

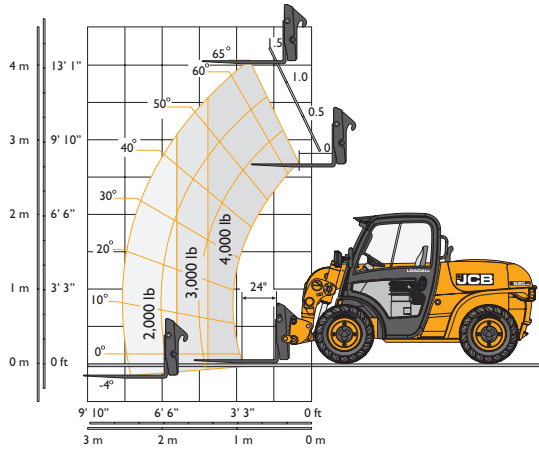


527-55 STATIC DIMENSIONS

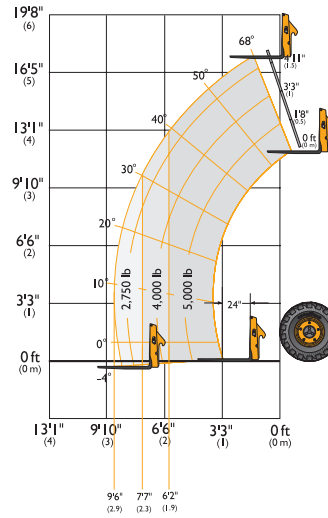
Machine Model	527-55 ft-in (m)
A Overall Height	6-11 (2.1)
B Inside Width of Cab	3-0 (0.92)
C Width Over Tires (minimum)	6-7 (2.0)
D Front Track	5-7 (1.7)
E Wheelbase	7-6 (2.3)
F Overall Length to Front of Tires	11-2 (3.4)

Machine Model	527-55 ft-in (m)
G Overall Length to Front of Carriage	13-1 (4.0)
H Ground Clearance	1-1 (0.33)
Outer Turn Radius Over Tires	9-10 (3.0)
Weight	lb (kg) 12,456 (5650)
Tires	12.5/80 x 18

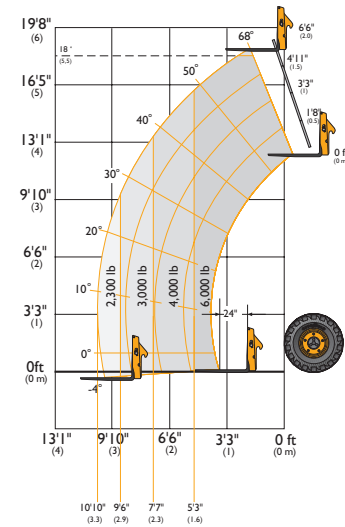
LIFT PERFORMANCE – 520-40



LIFT PERFORMANCE – 524-50



LIFT PERFORMANCE – 527-55



LIFT PERFORMANCE

Machine Model		Compact Tool Carrier	Skid Steer Quick Attach	Compact Tool Carrier	Compact Tool Carrier
		520-40	520-40	524-50	527-55
Lift Capacity at Full Height	lb (kg)	4000 (1814)	4000 (1814)	5000 (2268)	6000 (2721)
Lift Capacity at Full Reach	lb (kg)	2000 (900)	2000 (900)	2750 (1247)	2300 (1043)
Maximum Lift Height	ft-in (m)	13-3 (4.0)	13-2 (4.0)	17-4 (5.3)	18-4 (5.6)
Reach at Maximum Lift Height	ft-in (m)	2-11 (.9)	2-8 (.8)	2-0 (0.6)	2-6 (0.7)
Maximum Reach Forward	ft-in (m)	8-6 (2.6)	8-4 (2.5)	9-6 (2.9)	10-10 (3.3)

LOADER PERFORMANCE

Machine Model		Compact Tool Carrier	Skid Steer Tool Carrier	Compact Tool Carrier	Compact Tool Carrier
		520-40	520-40	524-50	527-55
Bucket Rated Capacity	yd ³ (m ³)	0.92 (0.7)	0.65 (0.5)	1.3 (1.0)	1.3 (1.0)
Breakout Force	lbf (kgf)	8157 (3700)	7495 (3390)	8993 (40)	8993 (40)
Dump Height (maximum)	ft-in (m)	11-8 (3.5)	11-7 (3.5)	14-11 (4.5)	16-5 (5.0)
Dump Angle at Maximum Height	degrees	33	40	45	45
Hinge Pin Height (maximum)	ft-in (m)	13-1 (4.0)	13-1 (4.0)	16-8 (5.1)	18-2 (5.5)
Rollback Angle at Ground	degrees	38	31	40	40
Carriage Rotation Angle (total)	degrees	140	140	150	150
Bucket Width	ft-in (m)	5-8 (1.7)	5-7 (1.7)	6-10 (2.1)	6-10 (2.1)



ENGINE

Latest technology and advanced design provides low fuel consumption, reduced noise, high torque and power output, total reliability and minimal maintenance.

USA EPA Tier III CARB emission compliant.

Machine Model		520-40	524-50 / 527-55
Power Rating @ 2800 rpm			
Gross ISO 14396	hp (kW)	49 (37)	74 (55)
Torque Rating @ 1200 rpm			
ISO 14396	lbf ft (Nm)	103.7 (140.6)	214 (327)
Aspiration		Naturally Aspirated	Turbo

TRANSMISSION & AXLES

Transmission:

Hydrostatic 2 speed transmission.

Closed loop variable displacement piston pump and variable displacement bent axis motor.

Transmission inching facility on operation of a combined inching and braking pedal.

Axles:

Front and rear drive axles: Epicyclic hub reduction type with mid mounted drop box (Permanent 4WS for 520-40).

– Rear axle oscillation.

– Optional front and rear limited slip diff axles.

Travel Speed – 12.4 mph (20 km/h)

BRAKES

Service Brake: Hydraulically activated, disc brake on the transmission output shaft.

Parking Brake: Manually actuated disc brake on the transmission output shaft.

BOOM AND CARRIAGE

Boom is manufactured from high tensile steel.

Low maintenance, long life wear pads.

JCB tool carrier parallel lift carriage with manual or hydraulic pin locking, accepts forkframe with integral pallet forks and a wide range of attachments.

Compact Tool Carrier: Compact Loadall compatibility – 520-40, 524-50 & 527-55

Skid Steer Tool Carrier: Skid steer universal compatibility hitch – 520-40 only

SERVICE CAPACITIES

		520-40	524-50 / 527-55
Fuel tank	gal (l)	16 (61)	19.8 (75)
Hydraulic tank	gal (l)	8.7 (33)	18.5 (70)
Coolant	gal (l)	2.1 (8)	

ELECTRICS

12 V negative ground, 95 AH heavy duty battery. 55 amp alternator, for 520-40. 110 AH battery, 75 amp alternator for 524-50 and 527-55.



HYDRAULICS

Machine Model		520-40	524-50/527-55
Operating System Pressure	psi (bar)	3626 (250)	3626 (250)
Flow at System Pressure	gal/min (l/min)	16 (60)	22 (85)
Cycle Times		Seconds	Seconds
Boom Raise		5.8	7.7
Boom Lower		4	5.7
Extend		5.7	5.5
Retract		4	4.9
Bucket Dump		3.7	2.1
Bucket Crowd		3.2	3
Hydraulic Flow at Auxiliary Couplers	gal/min (l/min)	15.8 (60)	15.8 (60)

STEERING

Full power hydrostatic steering with three mode options: front wheel steer, all wheel steer, and crab steer. All operated from a selection switch inside the cab (Permanent 4WS for 520-40).

Permanent four wheel drive with 52 degrees (32° for 520-40) steer angle front and rear provides exceptional maneuverability.

SAFETY CHECK VALVES

Fitted to tilt (roll back and dump), boom extension and lift cylinders.

CAB

Quiet, safe and comfortable cab conforms to ROPS ISO3471 and FOPS ISO 3449. Fitted with ash tray, cup holder and radio console. Tinted glass all round with laminated front and roof glass. Front window, wiper/washer and heater defroster. Opening door window. Visual warning system for coolant temperature, engine oil pressure, air cleaner, battery charge, transmission oil pressure, engine temperature, fuel gauge and hourmeter.

Boom control lever incorporating forward/reverse switch. Floor mounted throttle and brake pedals. Adjustable deluxe suspension seat. Side mounted park brake lever.

Safety canopy as above but with side screen, roof glass and rear glass. No door or front glass. Wipers and heater/defroster not applicable.

OPTIONS AND ACCESSORIES

Options: Road lights, rotating flashing beacon, limited slip diff front and rear axles, screen guard, sun blind, mechanical or hydraulic compact tool carrier, Skid Steer tool carrier (only available on 520-40) battery isolator, top and rear window wiper/washer.

Attachments: Contact your local dealer for details of the comprehensive range.



A GLOBAL COMMITMENT TO QUALITY

JCB's total commitment to its products and customers has helped it grow from a one-man business into one of the world's largest manufacturers of backhoe loaders, crawler excavators, wheeled excavators, telescopic handlers, wheeled loaders, dump trucks, rough terrain fork lifts, industrial fork lifts, mini/midi excavators, skid steer loaders and tractors.

By making constant and massive investments in the latest production technology, the JCB factories have become some of the most advanced in the world.

By leading the field in innovative research and design, extensive testing and stringent quality control, JCB machines have become renowned all over the world for performance, value and reliability.

And with an extensive dealer sales and service network in over 150 countries, we aim to deliver the best customer support in the industry.

Through setting the standards by which others are judged, JCB has become one of the world's most impressive success stories.



JCB Headquarters Savannah, 2000 Bamford Blvd, Savannah, GA 31322 Tel: (912) 447-2000 Fax: (912) 447-2299 www.jcb.com

JCB reserves the right to change design, materials and/or specifications without notice. Specifications are applicable to units sold in the United States and Canada. The JCB logo is a registered trademark of J C Bamford Excavators Ltd.