

KOMATSU

PC490-11 **PC490LC-11**

EU Stage IV Engine

HYDRAULIC EXCAVATOR



PC490

ENGINE POWER

270 kW / 362 HP @ 1.900 rpm

OPERATING WEIGHT

PC490-11: 46.575 - 47.415 kg
PC490LC-11: 47.424 - 48.924 kg

BUCKET CAPACITY

max. 3,50 m³

Walk-Around

INCREASED FUEL EFFICIENCY AND ENVIRONMENTAL PERFORMANCE

Powerful and environmentally friendly

- Low consumption EU Stage IV engine
- Fuel-saving engine and hydraulic technology
- Adjustable Eco-gauge and auto idle stop
- Reduced wastage

First-class operator comfort

- Fully air suspended operator station
- Low noise design
- Low vibration levels
- Improved widescreen hi-res display monitor
- Improved operator convenience



PC490/LG-11

images may display optional equipment or specifications not available in your area.

Total versatility

- Ideal for a wide range of applications
- 6 working modes
- Two-mode boom control
- Wide choice of options
- Built-in versatility

Highest safety standards

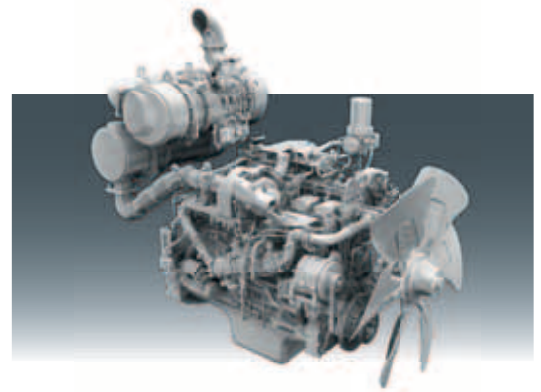
- Safe SpaceCab™
ROPS compliant with ISO 12117-2:2008
- Improved rear view camera system
with optional side view camera
- Optimal jobsite safety
- Safe access, easy maintenance
- Falling Object Protection System (FOPS) optional
- Hydraulic auto lock function

Quality you can rely on

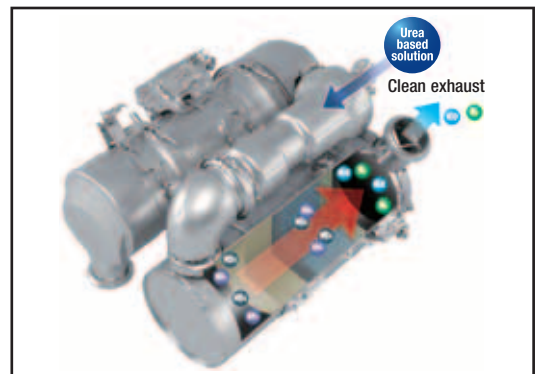
- Reliable and efficient
- Rugged design
- Komatsu-quality components
- Extensive dealer support network

KOMTRAX™

- Komatsu Wireless Monitoring System



New, low consumption Komatsu SAA6D125E-7 engine




New heavy-duty after treatment system combines the Komatsu Diesel Particulate Filter (KDPF) and Selective Catalytic Reduction (SCR) to fully comply with EU Stage IV emissions.



Fully air suspended operator station ensures maximum operator comfort.



Improved monitoring system with rear view camera image on the default screen. Eco gauge, eco guidance and fuel consumption gauge help to further reduce consumption.



Complimentary maintenance program for customers

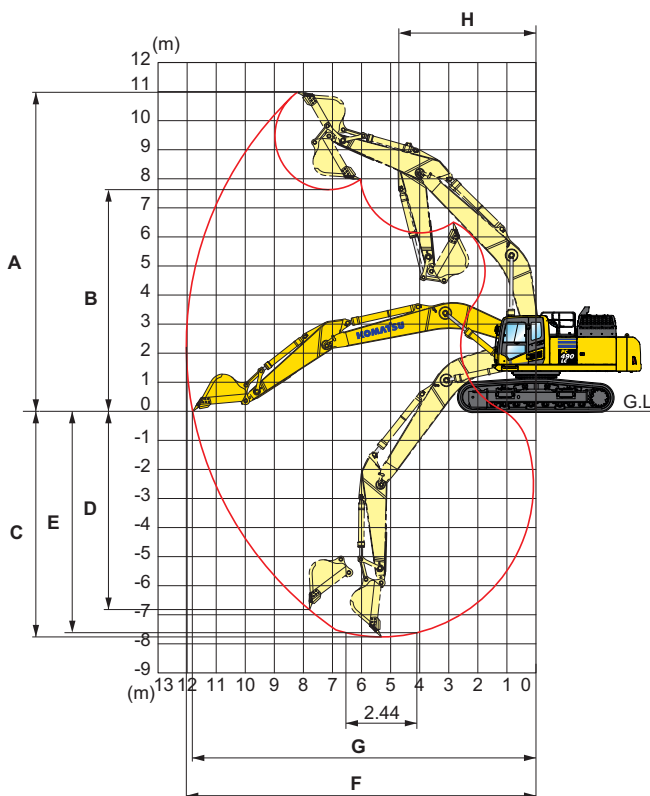
ENGINE

Model Komatsu SAA6D125E-7
 Type Common rail direct injection, water-cooled, emissionised, turbocharged, after-cooled diesel
 Engine power
 at rated engine speed 1.900 rpm
 ISO 14396 270 kW/362 HP
 ISO 9249 (net engine power) 268 kW/359 HP
 No. of cylinders 6
 Bore x stroke 125 x 150 mm
 Displacement 11,04 ltr

HYDRAULIC SYSTEM

Type HydrauMind. Closed-centre system with load sensing and pressure compensation valves
 Additional circuits 2 additional circuits with proportional control can be installed
 Main pump 2 variable displacement piston pumps supplying boom, arm, bucket, swing and travel circuits
 Maximum pump flow 2 x 345 ltr/min
 Relief valve settings
 Implement 380 kg/cm²
 Travel 380 kg/cm²
 Swing 285 kg/cm²
 Pilot circuit 33 kg/cm²

WORKING RANGE



UNDERCARRIAGE

Construction X-frame centre section with box section track frames
 Track assembly
 Type Fully sealed
 Shoes (each side) 46 (PC490), 49 (PC490LC)
 Tension Combined spring and hydraulic unit
 Rollers
 Track rollers (each side) 7 (PC490), 8 (PC490LC)
 Carrier rollers (each side) 2

ENVIRONMENT

Engine emissions Fully complies with EU Stage IV exhaust emission regulations
 Noise levels
 LwA external 107 dB(A) (2000/14/EC Stage II)
 LpA operator ear 71 dB(A) (ISO 6396 dynamic test)
 Vibration levels (EN 12096:1997)*
 Hand/arm ≤ 2,5 m/s² (uncertainty K = 0,25 m/s²)
 Body ≤ 0,5 m/s² (uncertainty K = 0,10 m/s²)
 * for the purpose of risk assessment under directive 2002/44/EC, please refer to ISO/TR 25398:2006.

ARM LENGTH	WITH SHORT BOOM						
	2,4 m	2,9 m	3,4 m	4,0 m	4,8 m	2,4 m	2,9 m
A Max. digging height	10.375 mm	10.350 mm	10.980 mm	11.090 mm	11.550 mm	10.510 mm	10.550 mm
B Max. dumping height	7.135 mm	7.145 mm	7.630 mm	7.780 mm	8.210 mm	7.075 mm	7.115 mm
C Max. digging depth	6.780 mm	7.280 mm	7.755 mm	8.380 mm	9.190 mm	6.365 mm	6.865 mm
D Max. vertical wall digging depth	5.240 mm	5.635 mm	6.805 mm	7.220 mm	8.085 mm	4.365 mm	4.950 mm
E Max. digging depth of cut for 2,44 m level	6.585 mm	7.090 mm	7.615 mm	8.250 mm	9.080 mm	5.630 mm	6.710 mm
F Max. digging reach	11.080 mm	11.445 mm	12.030 mm	12.565 mm	13.365 mm	10.605 mm	10.985 mm
G Max. digging reach at ground level	10.840 mm	11.215 mm	11.810 mm	12.355 mm	13.170 mm	10.360 mm	10.750 mm
H Min. swing radius	4.835 mm	4.810 mm	4.735 mm	4.800 mm	4.885 mm	4.265 mm	4.295 mm